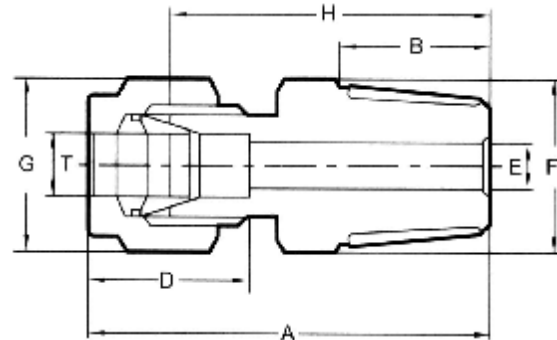
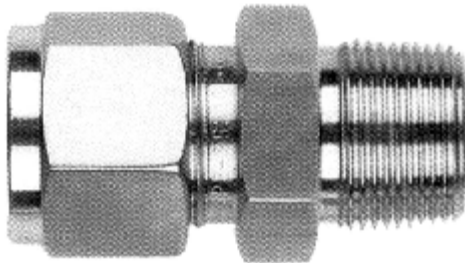


COMPRESSION TUBE FITTINGS

WELLGROW INDUSTRIES CORP.

MC Male Connector



Metric

TUBE O.D.	PT-NPT MALE PIPE SIZE	CATALOG NUMBER	A	B	D	E	F	G	H
2	1/8	MC-2-1	30.8	10	12.9	1	10	10	24.2
3	1/8	MC-3-1	30.8	10	12.9	2	10	10	24.2
3	1/4	MC-3-2	34.4	13	12.9	2	14	10	27.8
4	1/8	MC-4-1	31.5	10.0	13.7	3	10	12	24.9
4	1/4	MC-4-2	35.1	13.0	13.7	3	14	12	28.5
4	3/8	MC-4-3	37.1	14.0	13.7	3	17	12	30.5
4	1/2	MC-4-4	41.1	17.0	13.7	3	22	12	34.5
6	1/8	MC-6-1	33.1	10.0	15.3	5	14	14	25.7
6	1/4	MC-6-2	36.7	13.0	15.3	5	14	14	29.3
6	3/8	MC-6-3	38.2	14.0	15.3	5	17	14	30.8
6	1/2	MC-6-4	42.7	17.0	15.3	5	22	14	35.3
8	1/8	MC-8-1	34.5	10.0	16.2	5	14	17	27.0
8	1/4	MC-8-2	37.5	13.0	16.2	6	14	17	30.0
8	3/8	MC-8-3	39.1	14.0	16.2	6	17	17	31.6
8	1/2	MC-8-4	43.6	17.0	16.2	6	22	17	36.1
10	1/8	MC-10-1	36.6	10.0	17.2	5	19	19	29.0
10	1/4	MC-10-2	39.7	13.0	17.2	6	19	19	32.1
10	3/8	MC-10-3	40.7	14.0	17.2	8	19	19	33.1
10	1/2	MC-10-4	44.5	17.0	17.2	8	22	19	36.9
10	3/4	MC-10-6	48.0	19.0	17.2	8	27	19	40.4
12	1/8	MC-12-1	39.1	10.0	22.8	5	22	22	29.0
12	1/4	MC-12-2	42.2	13.0	22.8	6	22	22	32.1
12	3/8	MC-12-3	43.2	14.0	22.8	8	22	22	33.1
12	1/2	MC-12-4	47.0	17.0	22.8	10	22	22	36.9
12	3/4	MC-12-6	50.5	19.0	22.8	10	27	22	40.4
12	1	MC-12-8	55.3	22.0	22.8	10	34	22	45.2
14	3/8	MC-14-3	43.9	14.0	24.4	8	24	27	33.8
14	1/2	MC-14-4	47.0	17.0	24.4	10	24	27	36.9
14	3/4	MC-14-6	50.5	19.0	24.4	10	27	27	40.4
15	3/8	MC-15-3	47.0	14	24.4	8	24	27	33.8
15	1/2	MC-15-4	49.0	17	24.4	10	24	27	36.9
15	3/4	MC-15-6	50.5	19	24.4	10	27	27	40.4
16	3/8	MC-16-3	43.9	14	24.4	8	24	27	33.8
16	1/2	MC-16-4	47.0	17	24.4	10	24	27	36.9
16	3/4	MC-16-6	50.5	19	24.4	12	27	27	40.4
18	3/8	MC-18-3	45.5	14.0	24.4	8	27	30	35.4
18	1/2	MC-18-4	48.5	17.0	24.4	10	27	30	38.4
18	3/4	MC-18-6	50.5	19.0	24.4	15	27	30	40.4
18	1	MC-18-8	55.3	22.0	24.4	15	34	30	45.2
20	1/2	MC-20-4	50.3	17.0	26.0	10	30	32	40.2
20	3/4	MC-20-6	52.3	19.0	26.0	15	30	32	42.2
22	1/2	MC-22-4	50.3	17.0	26.0	10	30	32	40.2
22	3/4	MC-22-6	52.3	19.0	26.0	16.5	30	32	42.2
22	1	MC-22-8	55.2	22.0	26.0	16.5	34	32	45.1
25	1/2	MC-25-4	55.5	17.0	31.3	10.0	34	38	43.2
25	3/4	MC-25-6	57.5	19.0	31.3	16.5	34	38	45.2
25	1	MC-25-8	60.4	22.0	31.3	20.0	34	38	48.1

COMPRESSION TUBE FITTINGS

WELLGROW INDUSTRIES CORP.

Fractional

TUBE O.D.	PT-NPT MALE PIPE SIZE	CATALOG NUMBER	A	B	D	E	F	G	H
1/16	1/8	MC-005-1	26.5	10.0	8.6	1	10	10	22.7
1/16	1/4	MC-005-2	29.8	13.0	8.6	1	14	10	26.0
1/8	1/8	MC-01-1	30.8	10.0	12.7	3	12	10	24.2
1/8	1/4	MC-01-2	34.4	13.0	12.7	3	14	10	27.8
1/8	3/8	MC-01-3	35.6	14.0	12.7	3	17	10	29.0
1/8	1/2	MC-01-4	40.1	17.0	12.7	3	22	10	33.5
3/16	1/8	MC-015-1	31.5	10.0	13.7	3	12	12	24.9
3/16	1/4	MC-015-2	35.1	13.0	13.7	3	14	12	28.5
1/4	1/8	MC-02-1	33.1	10.0	15.3	5	14	14	27.7
1/4	1/4	MC-02-2	36.6	13.0	15.3	5	14	14	29.3
1/4	3/8	MC-02-3	38.2	14.0	15.3	5	17	14	30.8
1/4	1/2	MC-02-4	42.6	17.0	15.3	5	22	14	35.1
1/4	3/4	MC-02-6	46.1	19.0	15.3	5	27	14	38.8
3/8	1/8	MC-03-1	35.6	10.0	16.8	5	17	17	28.2
3/8	1/4	MC-03-2	38.8	13.0	16.8	6	17	17	31.3
3/8	3/8	MC-03-3	39.8	14.0	16.8	8	17	17	32.3
3/8	1/2	MC-03-4	44.1	17.0	16.8	8	22	17	36.8
3/8	3/4	MC-03-6	47.7	19.0	16.8	8	27	17	40.3
1/2	1/8	MC-04-1	39.2	10.0	22.8	5	22	22	29.0
1/2	1/4	MC-04-2	42.2	13.0	22.8	6	22	22	32.1
1/2	3/8	MC-04-3	43.2	14.0	22.8	8	22	22	33.1
1/2	1/2	MC-04-4	46.9	17.0	22.8	10	22	22	36.8
1/2	3/4	MC-04-6	50.4	19.0	22.8	10	27	22	40.3
1/2	1	MC-04-8	55.2	22.0	22.8	10	35	22	45.0
5/8	3/8	MC-05-3	43.9	14.0	24.4	8	24	27	33.8
5/8	1/2	MC-05-4	46.9	17.0	24.4	10	24	27	36.8
5/8	3/4	MC-05-6	50.4	19.0	24.4	12	27	27	40.3
3/4	1/2	MC-06-4	48.4	17.0	24.4	10	27	30	38.2
3/4	3/4	MC-06-6	50.4	19.0	24.4	15	27	30	40.3
3/4	1	MC-06-8	55.2	22.0	24.4	15	35	30	45.0
1	1/2	MC-08-4	55.4	17.0	31.3	10	35	38	43.1
1	3/4	MC-08-6	57.4	19.0	31.3	16.5	35	38	45.1
1	1	MC-08-8	60.4	22.0	31.3	20	35	38	48.1