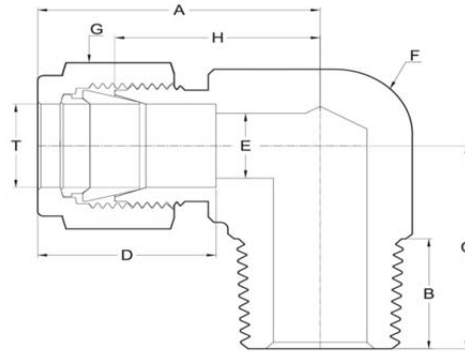


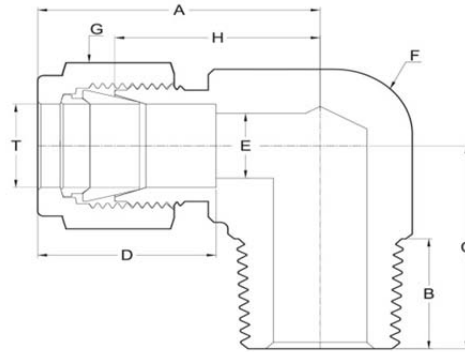
ME Male Elbow



Metric

TUBE O.D.	MALE PIPE SIZE	ITEM NUMBER	A	B	C	D	E	F	G	H
3	1/8	ME-3-1	24.4	10.0	18.7	12.9	2.5	12	7/16	17.7
3	1/4	ME-3-2	25.0	13.0	22.3	12.9	2.5	14	7/16	18.3
4	1/8	ME-4-1	24.8	10.0	18.7	13.7	2.5	12	12	17.7
4	1/4	ME-4-2	25.4	13.0	22.3	13.7	2.5	14	12	18.3
4	3/8	ME-4-3	27.8	14.0	25.7	13.7	2.5	17	12	20.7
4	1/2	ME-4-4	30.5	17.0	31.4	13.7	2.5	22	12	23.4
6	1/8	ME-6-1	26.3	10.0	18.7	15.3	5.0	12	9/16	18.7
6	1/4	ME-6-2	26.9	13.0	22.3	15.3	5.0	14	9/16	19.3
6	3/8	ME-6-3	29.3	14.0	25.7	15.3	5.0	17	9/16	21.7
6	1/2	ME-6-4	32.0	17.0	31.4	15.3	5.0	22	9/16	24.4
8	1/8	ME-8-1	28.6	10.0	19.3	16.2	6.0	14	5/8	20.8
8	1/4	ME-8-2	28.6	13.0	22.3	16.2	6.0	14	5/8	20.8
8	3/8	ME-8-3	31.0	14.0	25.7	16.2	6.0	17	5/8	23.2
8	1/2	ME-8-4	33.7	17.0	31.4	16.2	6.0	22	5/8	25.9
10	1/8	ME-10-1	31.6	10.0	21.7	17.2	8.0	17	19	23.7
10	1/4	ME-10-2	31.6	13.0	24.7	17.2	8.0	17	19	23.7
10	3/8	ME-10-3	31.6	14.0	25.7	17.2	8.0	17	19	23.7
10	1/2	ME-10-4	34.3	17.0	31.4	17.2	8.0	22	19	26.4
12	1/8	ME-12-1	36.2	10.0	24.5	22.8	10.0	20	7/8	26.5
12	1/4	ME-12-2	36.7	13.0	27.5	22.8	10.0	20	7/8	27.0
12	3/8	ME-12-3	36.7	14.0	27.4	22.8	10.0	20	7/8	27.0
12	1/2	ME-12-4	36.1	17.0	31.4	22.8	10.0	22	7/8	26.4
12	3/4	ME-12-6	39.3	19.0	36.6	22.8	10.0	27	7/8	29.6
12	1	ME-12-8	49.6	22.0	45.5	22.8	10.0	34	7/8	39.9
14	3/8	ME-14-3	36.9	14.0	28.0	24.4	12.0	24	25	26.5
14	1/2	ME-14-4	36.9	17.0	31.0	24.4	12.0	24	25	26.5
14	3/4	ME-14-6	40.0	19.0	36.6	24.4	12.0	27	25	29.6
14	1	ME-14-8	50.3	22.0	45.5	24.4	12.0	34	25	39.9

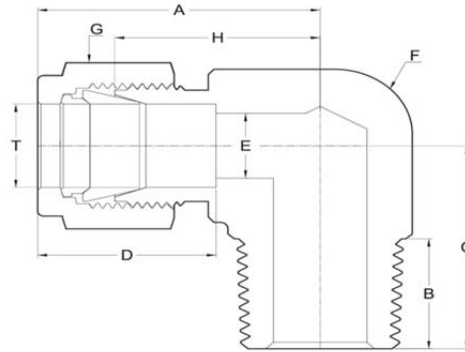
ME Male Elbow



Metric

TUBE O.D.	MALE PIPE SIZE	ITEM NUMBER	A	B	C	D	E	F	G	H
15	3/8	ME-15-3	37.0	14.0	28.0	24.4	12.0	24	25	26.5
15	1/2	ME-15-4	37.0	17.0	31.0	24.4	12.0	24	25	26.5
15	3/4	ME-15-6	40.1	19.0	36.6	24.4	12.0	27	25	29.6
16	3/8	ME-16-3	37.2	14.0	28.0	24.4	14.0	24	25	26.5
16	1/2	ME-16-4	37.2	17.0	31.0	24.4	14.0	24	25	26.5
16	3/4	ME-16-6	40.3	19.0	36.6	24.4	14.0	27	25	29.6
16	1	ME-16-8	50.6	22.0	45.5	24.4	14.0	34	25	39.9
18	3/8	ME-18-3	40.0	14.0	31.6	24.4	16.0	27	30	29.6
18	1/2	ME-18-4	40.0	17.0	34.6	24.4	16.0	27	30	29.6
18	3/4	ME-18-6	40.0	19.0	36.6	24.4	16.0	27	30	29.6
18	1	ME-18-8	50.3	22.0	45.5	24.4	16.0	34	30	39.9
20	3/8	ME-20-3	43.7	14.0	36.2	26.0	18.0	30	32	34.7
20	1/2	ME-20-4	43.7	17.0	38.7	26.0	18.0	30	32	34.7
20	3/4	ME-20-6	43.7	19.0	38.7	26.0	18.0	30	32	34.7
20	1	ME-20-8	48.9	22.0	45.5	26.0	18.0	34	32	39.9
22	3/8	ME-22-3	44.0	14.0	36.2	26.0	18.0	30	32	34.7
22	1/2	ME-22-4	44.0	17.0	38.7	26.0	18.0	30	32	34.7
22	3/4	ME-22-6	44.0	19.0	38.7	26.0	18.0	30	32	34.7
22	1	ME-22-8	49.2	22.0	45.5	26.0	18.0	34	32	39.9
25	1/2	ME-25-4	52.9	17.0	43.0	31.3	22.0	34	1-1/2	40.5
25	3/4	ME-25-6	52.9	19.0	45.0	31.3	22.0	34	1-1/2	40.5
25	1	ME-25-8	52.9	22.0	45.5	31.3	22.0	34	1-1/2	40.5

ME Male Elbow



Fractional

TUBE O.D.	MALE PIPE SIZE	ITEM NUMBER	A	B	C	D	E	F	G	H
1/16	1/8	ME-005-1	19.7	10.0	18.7	8.6	1.5	12	10	15.7
1/16	1/4	ME-005-2	20.3	13.0	22.3	8.6	1.5	14	10	16.3
1/8	1/8	ME-01-1	24.6	10.0	18.7	12.7	2.5	12	7/16	17.7
1/8	1/4	ME-01-2	25.2	13.0	22.3	12.7	2.5	14	7/16	18.3
1/8	3/8	ME-01-3	27.6	14.0	25.7	12.7	2.5	17	7/16	20.7
1/8	1/2	ME-01-4	30.3	17.0	31.4	12.7	2.5	22	7/16	23.4
3/16	1/8	ME-015-1	24.6	10.0	18.7	13.7	2.5	12	12	17.7
3/16	1/4	ME-015-2	25.2	13.0	22.3	13.7	2.5	14	12	18.3
3/16	3/8	ME-015-3	27.6	14.0	25.7	13.7	2.5	17	12	20.7
3/16	1/2	ME-015-4	30.3	17.0	31.4	13.7	2.5	22	12	23.4
1/4	1/8	ME-02-1	26.5	10.0	18.7	15.2	5.0	12	9/16	18.7
1/4	1/4	ME-02-2	27.1	13.0	22.3	15.2	5.0	14	9/16	19.3
1/4	3/8	ME-02-3	29.5	14.0	25.7	15.2	5.0	17	9/16	21.7
1/4	1/2	ME-02-4	32.2	17.0	31.4	15.2	5.0	22	9/16	24.4
1/4	3/4	ME-02-6	35.4	19.0	36.4	15.2	5.0	27	9/16	27.6
1/4	1	ME-02-8	45.7	22.0	45.5	15.2	5.0	34	9/16	37.9
3/8	1/8	ME-03-1	29.0	10.0	19.3	16.8	7.7	14	11/16	21.3
3/8	1/4	ME-03-2	29.0	13.0	22.3	16.8	7.7	14	11/16	21.3
3/8	3/8	ME-03-3	31.4	14.0	25.7	16.8	7.7	17	11/16	23.7
3/8	1/2	ME-03-4	34.1	17.0	31.4	16.8	7.7	22	11/16	26.4
3/8	3/4	ME-03-6	37.3	19.0	36.4	16.8	7.7	27	11/16	29.6
3/8	1	ME-03-8	47.6	22.0	45.5	16.8	7.7	34	11/16	39.9
1/2	1/8	ME-04-1	36.9	10.0	25.0	22.9	10.0	20	7/8	27.0
1/2	1/4	ME-04-2	36.9	13.0	27.0	22.9	10.0	20	7/8	27.0
1/2	3/8	ME-04-3	36.9	14.0	27.5	22.9	10.0	20	7/8	27.0
1/2	1/2	ME-04-4	36.3	17.0	31.4	22.9	10.0	22	7/8	26.4
1/2	3/4	ME-04-6	39.5	19.0	36.4	22.9	10.0	27	7/8	29.6
1/2	1	ME-04-8	49.8	22.0	45.5	22.9	10.0	34	7/8	39.9
5/8	3/8	ME-05-3	36.9	14.0	28.0	24.4	14.0	24	25	26.5
5/8	1/2	ME-05-4	36.9	17.0	31.0	24.4	14.0	24	25	26.5
5/8	3/4	ME-05-6	40.0	19.0	36.6	24.4	14.0	27	25	29.6
3/4	3/8	ME-06-3	40.5	14.0	31.6	24.4	16.0	27	1-1/8	29.6
3/4	1/2	ME-06-4	40.5	17.0	34.6	24.4	16.0	27	1-1/8	29.6
3/4	3/4	ME-06-6	40.5	19.0	36.6	24.4	16.0	27	1-1/8	29.6
3/4	1	ME-06-8	50.8	22.0	45.5	24.4	16.0	34	1-1/8	39.9
1	1/2	ME-08-4	52.9	17.0	43.5	31.2	22.0	34	1-1/2	40.5
1	3/4	ME-08-6	52.9	19.0	45.5	31.2	22.0	34	1-1/2	40.5
1	1	ME-08-8	52.9	22.0	45.5	31.2	22.0	34	1-1/2	40.5