

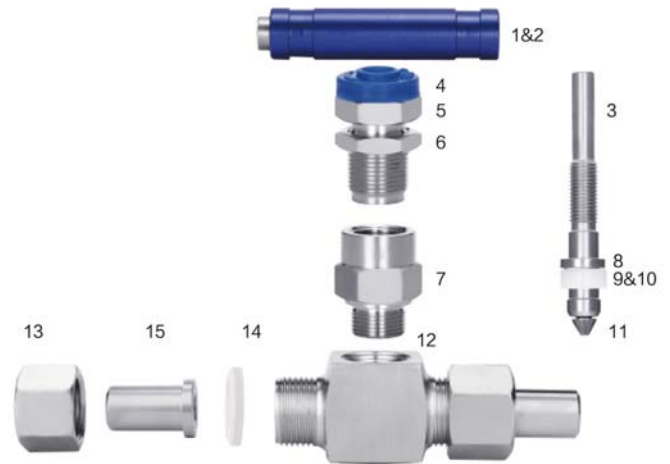
NVUW Union Weld Needle Valve, Inline Pattern

Features

1. Square bar stock body
2. Body material in Stainless Steel 316
3. Max. working pressure to 6000 psig (413 bar) at 37°C (100°F).
4. TFM1600 packing as standard; Graphite packing for option.
5. 100% factory tested.

Options

1. Packing material: TFM1600
Packing material: Graphite
2. Connection End: Union Weld



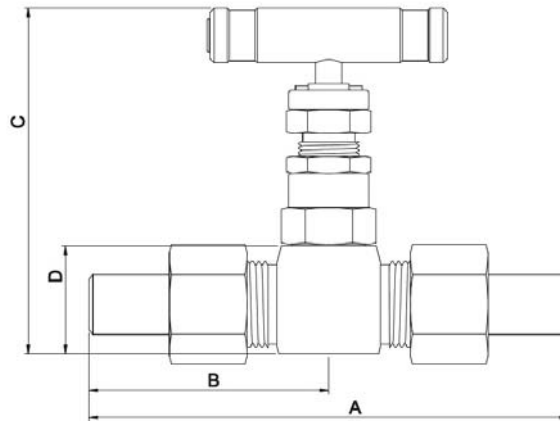
Pressure & Temperature ratings

Body Material	SS316	
Packing Material	TFM1600	Graphite
Temperature °C (°F)	Working Pressure psig(bar)	
-53°C (-65°F)~ +37°C (100°F)	6000 (413)	6000 (413)
93 (200)	5160 (355)	5160 (355)
121 (250)	4910 (338)	4910 (338)
148 (300)	4660 (321)	4660 (321)
176 (350)	4470 (307)	4470 (307)
204 (400)	4280 (294)	4280 (294)
232 (450)	-	4130 (284)
260 (500)	-	3980 (274)
315 (600)	-	3760 (259)
371(700)	-	3600 (248)
426 (800)	-	3460 (238)
482 (900)	-	3280 (225)
537 (1000)	-	3030 (208)

Material List

Item	Part Name	Q'ty	Material
1	Handle	1	Aluminum
2	Handle Set Screw	1	SS304
3	Stem	1	SS316
4	Dust Cap	1	PVC
5	Packing Bolt	1	SS316
6	Locking Nut	1	SS304
7	Bonnet	1	SS316
8	Gland	1	SS316
9	Upper Packing	1	TFM1600
10	Lower Packing	1	TFM1600
11	Stem Tip	1	SS630
12	Body	1	SS316
13	Welding Nut	2	SS316
14	Packing	2	PTFE
15	Welding Gland	2	SS316

NVUW Union Weld Needle Valve, Inline Pattern



Type	Item No.	Conn./Size	Orifice		Dimensions (mm)			
		Inlet/Outlet	mm	in.	A	B	C	D
Union Weld	NVUW-10-4	10mm	4	0.16	102.4	51.2	80.4	25
	NVUW-12-4	12mm	4	0.16	111	55.5	80.4	25
	NVUW-14-4	14mm	4	0.16	111	55.5	80.4	25
	NVUW-14-6	14mm	6	0.24	112	56.0	81.8	28
	NVUW-16-6	16mm	6	0.24	118	59.0	81.8	28
	NVUW-16-8	16mm	8	0.32	133	66.5	107.8	36
	NVUW-18-8	18mm	8	0.32	133	66.5	107.8	36
	NVUW-18-10	18mm	10	0.39	141	70.5	112.8	41
	NVUW-20-8	20mm	8	0.32	135	67.5	107.8	36
	NVUW-20-10	20mm	10	0.39	143	71.5	112.8	41
	NVUW-22-10	22mm	10	0.39	147	73.5	112.8	41
	NVUW-22-12	22mm	12	0.47	149	74.5	136.7	48
	NVUW-25-12	25mm	12	0.47	155	77.5	136.7	48
	NVUW-25-15	25mm	15	0.59	187	93.5	157.5	60
	NVUW-28-15	28mm	15	0.59	175	87.5	157.5	60
NVUW-32-15	32mm	15	0.59	177	88.5	157.5	60	