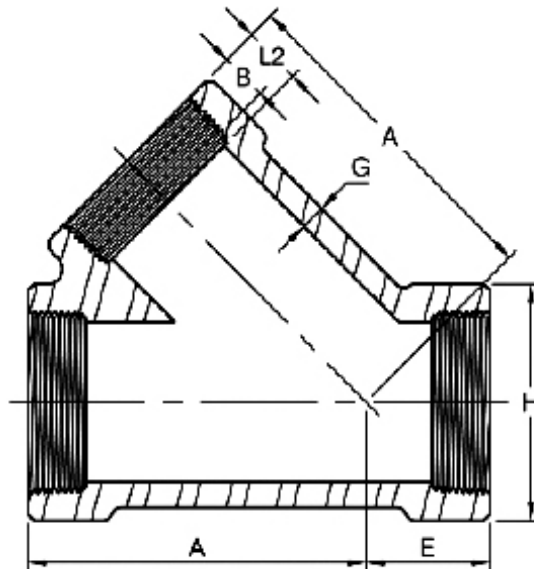


## 45° Lateral Tee Threaded



### 2000LB

DN	Nom. Pipe Size	Length of Thread (Min)		A	E	G <sup>(2)</sup> (Min)	H <sup>(2)</sup>
		B <sup>(3)</sup>	L2 <sup>(3)</sup>				
15	1/2"	10.9	13.6	46	20	3.18	33
20	3/4"	12.7	13.9	55	23	3.18	38
25	1"	14.7	17.3	65	26	3.68	46
32	1-1/4"	17.0	18.0	73	31	3.89	56
40	1-1/2"	17.8	18.4	82	35	4.01	62
50	2"	19.0	19.2	113	42	4.27	75
65	2-1/2"	23.6	28.9	136	56	5.61	92

### 3000LB

DN	Nom. Pipe Size	Length of Thread (Min)		A	E	G <sup>(2)</sup> (Min)	H <sup>(2)</sup>
		B <sup>(3)</sup>	L2 <sup>(3)</sup>				
15	1/2"	10.9	13.6	55	23	4.09	38
20	3/4"	12.7	13.9	65	26	4.32	46
25	1"	14.7	17.3	73	31	4.98	56
32	1-1/4"	17.0	18.0	82	35	5.28	62
40	1-1/2"	17.8	18.4	113	42	5.56	75
50	2"	19.0	19.2	136	56	7.14	84

(1) Dimensions in Millimeters.

(2) Dimensions refer to ANSI B16.11

(3) Dimension B is minimum length of perfect thread.

The length of useful thread (B plus threads with fully formed roots and flat crests) shall not be less than L2 (effective length of external thread) required by American National Standard for pipe threads (ANSI/ASME B1.20.1)

(4) Dimensions of BSP and PT are available if required.

(5) Dimensions may vary according to the customer's and manufacturer's requirement.