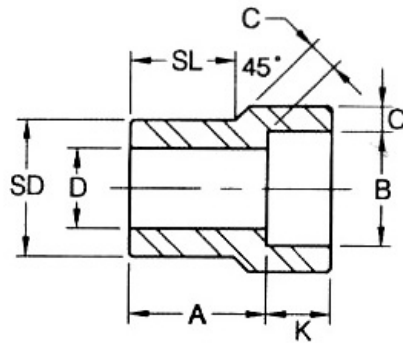
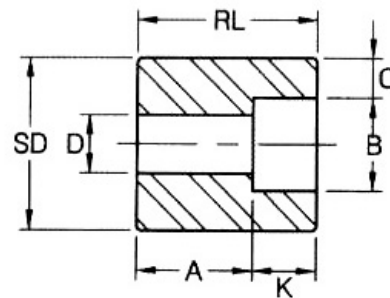


## Reducer Inserts Socket Weld

Socket Welding MSS-SP-79-2009



**Type 1**



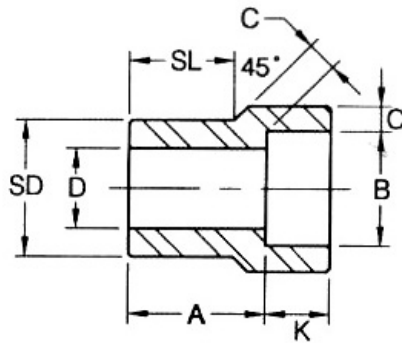
**Type 2 <sup>(1)</sup>**

Nom. Pipe Size	Type		Socket		Shank Dia. SD	Laying Length A		Bore D		Wall Min. C		Length			
			Dia. B	Depth Min. K								SL		RL (Min)	
	3000	6000			3000	6000	3000	6000	3000	6000					
3/8"x1/4"	1	1	14.35	10	17.15	19	21	9.0	6.5	3.78	4.60	14	16		
1/2"x3/8"	1	1	17.78	10	21.34	21	23	12.5	9.0	4.01	5.03	16	16		
1/2"x1/4"	1	1	14.35	10	21.34	21	21	9.0	6.5	3.78	4.60	16	16		
3/4"x1/2"	1	1	21.97	10	26.67	22	25	16.0	11.5	4.67	5.97	17	19		
3/4"x3/8"	2	1	17.78	10	26.67	16	22	12.5	9.0	4.01	5.03		19	27	
3/4"x1/4"	2	2	14.35	10	26.67	18	22	9.0	6.5	3.78	4.60			27	32
1"x3/4"	1	1	27.31	13	33.40	24	28	21.0	15.5	4.90	6.96	19	21		
1"x1/2"	2	1	21.97	10	33.40	16	28	16.0	11.5	4.67	5.97		21	28	
1"x3/8"	2	2	17.78	10	33.40	18	22	12.5	9.0	4.01	5.03			28	33
1"x1/4"	2	2	14.35	10	33.40	19	24	9.0	6.5	3.78	4.60			28	33
1-1/4"x1"	1	1	34.04	13	42.16	25	30	26.5	20.5	5.69	7.92	21	22		
1-1/4"x3/4"	2	2	27.31	13	42.16	18	21	21.0	15.5	4.90	6.96			32	35
1-1/4"x1/2"	2	2	21.97	10	42.16	19	22	16.0	11.5	4.67	5.97			32	35
1-1/4"x3/8"	2	2	17.78	10	42.16	21	24	12.5	9.0	4.01	5.03			32	35
1-1/4"x1/4"	2	2	14.35	10	42.16	22	25	9.0	6.5	3.78	4.60			32	35
1-1/2"x1-1/4"	1	1	42.80	13	48.26	28	35	35.0	29.5	6.07	7.92	22	25		
1-1/2"x1"	2	1	34.04	13	48.26	18	29	26.5	20.5	5.69	7.92		25	33	
1-1/2"x3/4"	2	2	27.31	13	48.26	19	25	21.0	15.5	4.90	6.96			33	40
1-1/2"x1/2"	2	2	21.97	10	48.26	21	27	16.0	11.5	4.67	5.97			33	40
1-1/2"x3/8"	2	2	17.78	10	48.26	22	28	12.5	9.0	4.01	5.03			33	40
2"x1-1/2"	1	1	48.90	13	60.32	32	39	41.0	34.0	6.35	8.90	25	28		
2"x1-1/4"	2	2	42.80	13	60.32	21	24	35.0	29.5	6.07	7.92			38	41
2"x1"	2	2	34.04	13	60.32	22	25	26.5	21.0	5.69	7.92			38	41
2"x3/4"	2	2	27.31	13	60.32	24	27	21.0	15.5	4.90	6.96			38	41
2"x1/2"	2	2	21.97	10	60.32	25	28	16.0	11.5	4.67	5.97			38	41
2-1/2"x2"	1	1	61.37	16	73.02	46	43	52.5	43.0	6.93	10.92	32	38		
2-1/2"x1-1/2"	2	2	48.90	13	73.02	35	35	41.0	34.0	6.35				54	54
2-1/2"x1-1/4"	2	2	42.80	13	73.02	37	37	35.0	29.5	6.07				54	54
2-1/2"x1"	2	2	34.04	13	73.02	38	38	26.5	21.0	5.69				54	54
2-1/2"x3/4"	2	2	27.31	13	73.02	40	38	21.0	15.5	4.90				54	54

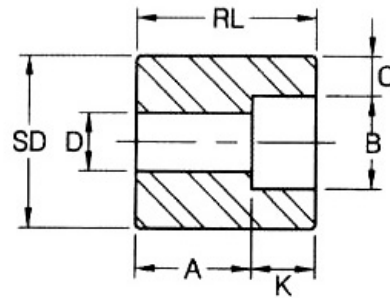
(Continued)

## Reducer Inserts Socket Weld

Socket Welding MSS-SP-79-2009



**Type 1**



**Type 2 <sup>(2)</sup>**

(Continued)

Nom. Pipe Size	Type		Socket		Shank Dia. SD	Laying Length A		Bore D		Wall Min. C		Length			
			Dia. B	Depth Min. K								SL		RL (Min)	
	3000	6000				3000	6000	3000	6000	3000	6000				
3"x2-1/2"	1	1	74.07	16	88.90	38	57	62.5	54.0	8.76		32	45		
3"x2"	2	2	61.37	16	88.90	25	32	52.5	43.0	6.93				48	54
3"x1-1/2"	2	2	48.90	13	88.90	29	32	41.0	34.0	6.35				48	54
3"x1-1/4"	2	2	42.80	13	88.90	30	32	35.0	29.5	6.07				48	54
3"x1"	2	2	34.04	13	88.90	32	32	26.5	21.0	5.69				48	54
4"x3"	2		90.04	16	114.30	33		78.0		9.50				60	
4"x2-1/2"	2		74.07	16	114.30	38		62.5		8.76				60	
4"x2"	2		61.37	16	114.30	38		52.5		6.93				60	
4"x1-1/2"	2		48.90	13	114.30	42		41.0		6.35				60	
4"x1-1/4"	2		42.80	13	114.30	43		35.0		6.07				60	

(1) Dimensions in Millimeters.

(2) At the option of the manufacturer type 2 reducer may be furnished in type 1 configuration.

### Dimensional Tolerance of Reducer Insert

Laying Length A	Size 3/8" through 3/4"	+ 1.50mm / -0.00mm
	Size 1" through 2"	+ 2.00mm / -0.00mm
	Size 2-1/2" through 4"	+ 2.50mm / -0.00mm
Socket Diameter B	Size 1/4" through 2"	± 0.25mm
	Size 2-1/2" through 3"	+ 0.40mm / -0.25mm
Bore D	Size 1/4" through 2"	± 0.80mm
	Size 2-1/2" through 3"	± 1.50mm
Shank Diameter SD	Size 3/8" through 1-1/2"	± 0.25mm
	Size 2" through 3"	± 0.50mm
	Size 4"	± 0.75mm
Shank Length SL	Size 3/8" through 3/4"	± 0.00mm / -1.50mm
	Size 1" through 2"	± 0.00mm / -2.00mm
	Size 2-1/2" through 4"	± 0.00mm / -2.50mm