

# Vacuum Components

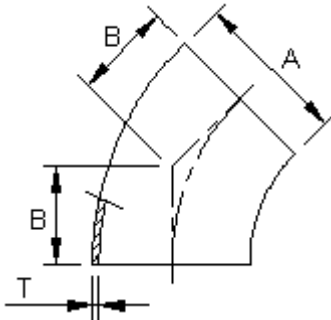


# VACUUM FITTINGS

WELLGROW INDUSTRIES CORP.

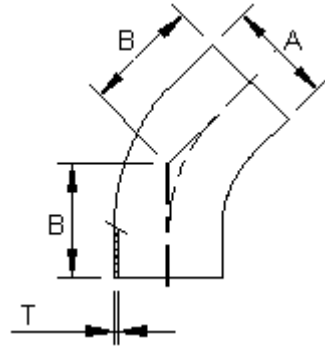
## Vacuum Components - Weld Fittings

### 45° Short Elbows



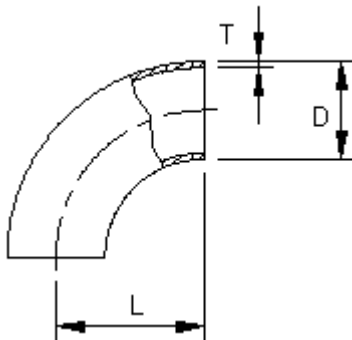
Model No.	Tube OD	A	B	T
2WK-075	3/4"	19.05	8.0	1.65
2WK-100	1"	25.4	15.9	1.65
2WK-150	1.5"	38.1	23.8	1.65
2WK-200	2"	50.8	31.8	1.65
2WK-250	2.5"	63.5	39.7	1.65
2WK-300	3"	76.2	47.6	1.65
2WK-400	4"	101.6	63.5	2.00

### 45° Long Elbows



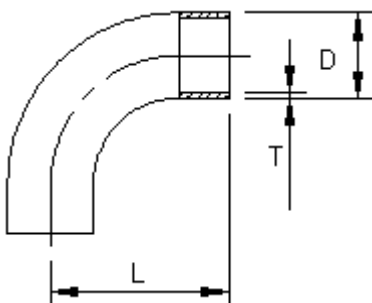
Model No.	Tube OD	A	B	T
2KS-075	3/4"	19.05	19.3	1.65
2KS-100	1"	25.4	30.2	1.65
2KS-150	1.5"	38.1	41.3	1.65
2KS-200	2"	50.8	58.7	1.65
2KS-250	2.5"	63.5	76.2	1.65
2KS-300	3"	76.2	93.7	1.65
2KS-400	4"	101.6	122.2	2.00

### 90° Short Elbows



Model No.	Tube OD	D	L	T
2WC-075	3/4"	19.05	28.6	1.65
2WC-100	1"	25.4	38.1	1.65
2WC-150	1.5"	38.1	57.2	1.65
2WC-200	2"	50.8	76.2	1.65
2WC-250	2.5"	63.5	95.2	1.65
2WC-300	3"	76.2	114.3	1.65
2WC-400	4"	101.6	152.4	2.00
2WC-600	6"	152.4	228.6	2.70

### 90° Long Elbows

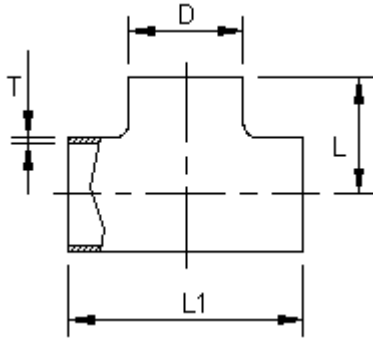


Model No.	Tube OD	D	L	T
2S-100	1"	25.4	52.4	1.65
2S-150	1.5"	38.1	74.6	1.65
2S-200	2"	50.8	103.2	1.65
2S-250	2.5"	63.5	131.8	1.65
2S-300	3"	76.2	160.3	1.65
2S-400	4"	101.6	211.1	2.00

# VACUUM FITTINGS

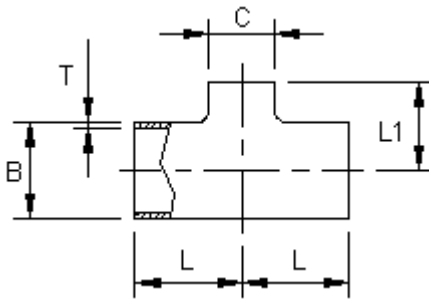
WELLGROW INDUSTRIES CORP.

## Long Equal Tees



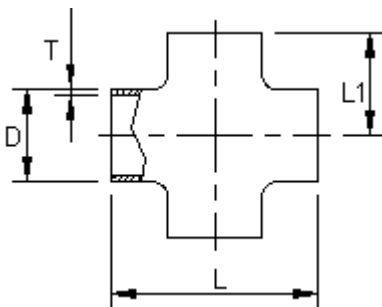
Model No.	Tube OD	D	L	L1	T
7WWW-075	3/4"	19.05	34.5	69.0	1.65
7WWW-100	1"	25.4	47.6	95.2	1.65
7WWW-150	1.5"	38.1	57.2	114.3	1.65
7WWW-200	2"	50.8	76.2	152.4	1.65
7WWW-250	2.5"	63.5	76.2	152.4	1.65
7WWW-300	3"	76.2	82.5	165.1	1.65
7WWW-400	4"	101.6	98.4	196.8	2.00
7WWW-600	6"	152.4	127.0	254.0	2.70

## Reducing Tees



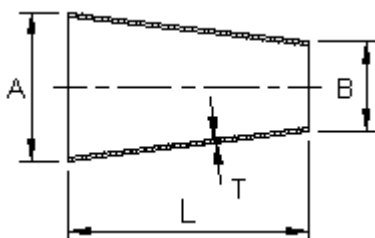
Model No.	Tube OD	B	C	L	L1	T
7RWWW-100-075	1"x3/4"	25.4	19.05	48.2	33.7	1.65
7RWWW-150-075	1.5"x3/4"	38.1	19.05	57.2	48.2	1.65
7RWWW-150-100	1.5"x1"	38.1	25.4	57.2	54	1.65
7RWWW-200-075	2"x3/4"	50.8	19.05	76.2	54.4	1.65
7RWWW-200-100	2"x1"	50.8	25.4	76.2	60.3	1.65
7RWWW-200-150	2"x1.5"	50.8	38.1	76.2	63.5	1.65
7RWWW-300-250	3"x2.5"	76.2	63.5	82.5	82.5	1.65
7RWWW-400-200	4"x2"	101.6	50.8	98.4	101.6	2.00
7RWWW-400-250	4"x2.5"	101.6	63.5	98.4	95.3	2.00
7RWWW-400-300	4"x3"	101.6	76.2	98.4	95.3	2.00
7RWWW-600-300	6"x3"	152.4	76.2	127	120.7	2.70
7RWWW-600-400	6"x4"	152.4	101.6	127	123.8	2.70

## 4-Way Crosses



Model No.	Tube OD	D	L	L1	T
9WWW-075	3/4"	19.05	69	34.5	1.65
9WWW-100	1"	25.4	95.2	47.6	1.65
9WWW-150	1.5"	38.1	114.3	57.2	1.65
9WWW-200	2"	50.8	152.4	76.2	1.65
9WWW-250	2.5"	63.5	152.4	76.2	1.65
9WWW-300	3"	76.2	165.1	82.5	1.65
9WWW-400	4"	101.6	196.8	98.4	2.00
9WWW-600	6"	152.4	254	127	2.70

## Concentric Reducers



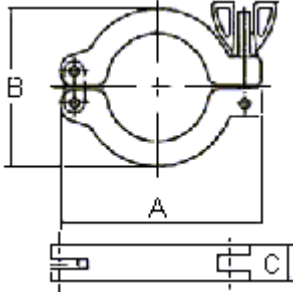
Model No.	Tube OD	A	B	L	T
31W-100-075	1"x3/4"	25.4	19.05	35	1.65
31W-150-075	1.5"x3/4"	38.1	19.05	60.3	1.65
31W-150-100	1.5"x1"	38.1	25.4	60.3	1.65
31W-200-100	2"x1"	50.8	25.4	60.3	1.65
31W-200-150	2"x1.5"	50.8	38.1	60.3	1.65
31W-250-150	2.5"x1.5"	63.5	38.1	60.3	1.65
31W-250-200	2.5"x2"	63.5	50.8	60.3	1.65
31W-300-200	3"x2"	76.2	50.8	92	1.65
31W-300-250	3"x2.5"	76.2	63.5	92	1.65
31W-400-200	4"x2"	101.6	50.8	92	2.11
31W-400-250	4"x2.5"	101.6	63.5	92	2.11
31W-400-300	4"x3"	101.6	76.2	92	2.11
31W-600-300	6"x3"	152.4	76.2	152.4	2.77
31W-600-400	6"x4"	152.4	101.6	152.4	2.77

# VACUUM FITTINGS

WELLGROW INDUSTRIES CORP.

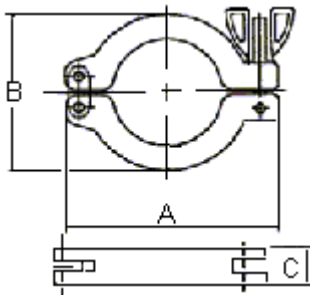
## Vacuum Components – KF Series

**Aluminum Swing Clamp Double Pin  
(Single Pin Type is available)**



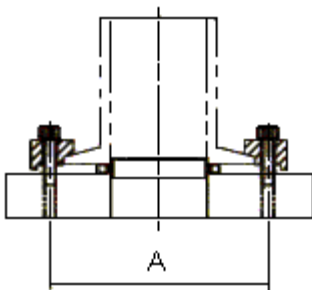
Model No.	A	B	C
CPP-16	61	45	18
CPP-25	72	55	18
CPP-40	90	70	18
CPP-50	123	95	26

**Aluminum Swing Clamp Double Pin  
(Nickel Plating)**



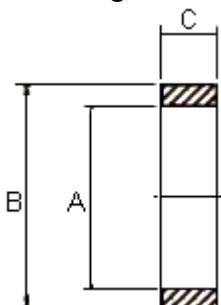
Model No.	A	B	C
CPP-16N	61	45	18
CPP-25N	72	55	18
CPP-40N	90	70	18
CPP-50N	113	90	26

**KF Nail Clamps Aluminum**



Model No.	Bolt	Q'TY	A
CPN-10	M6x20	3	43
CPN-16	M6X20	3	43
CPN-25	M6X20	4	53
CPN-40	M6X20	4	68
CPN-50	M6X20	6	88

**KF Overpressure Rings**

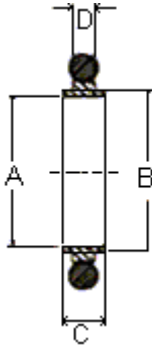


Model No.	A	B	C
OR-16	30.3	31	8.8
OR-25	40.2	42	8.8
OR-40	55.1	57	8.8
OR-50	66.5	69	8.8

# VACUUM FITTINGS

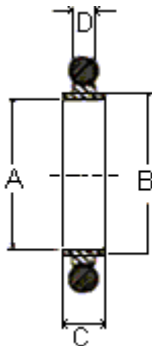
WELLGROW INDUSTRIES CORP.

## KF Centering Rings, Viton O'ring



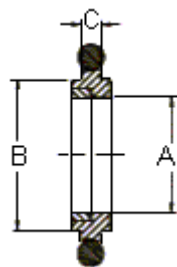
Model No.	A	B	C	D	O'ring (AS-568)
CR-V10	10	12	8	3.9	AS-311
CR-V16	16	17	8	3.9	AS-314
CR-V25	25	26	8	3.9	AS-320
CR-V40	40	41	8	3.9	AS-326
CR-V50	50	52	8	3.9	AS-330

## KF Centering Rings, NBR O'ring



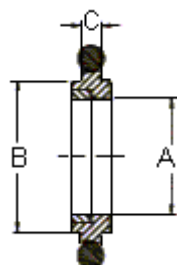
Model No.	A	B	C	D	O'ring (AS-568)
CR-N10	10	12	8	3.9	AS-311
CR-N16	16	17	8	3.9	AS-314
CR-N25	25	26	8	3.9	AS-320
CR-N40	40	41	8	3.9	AS-326
CR-N50	50	52	8	3.9	AS-330

## KF Mesh Centering Rings, Viton O'ring - USA



Model No.	A	B	C	O'ring (AS-568)
MCRA-V16	9.5	17	3.9	AS-314
MCRA-V25	19.5	26	3.9	AS-320
MCRA-V40	32	41	3.9	AS-326
MCRA-V50	43	52	3.9	AS-330
MCRA-V63	60.6	69.6	3.9	AS-336
MCRA-V80	73.6	82.6	3.9	AS-340
MCRA-V100	89.6	101.6	3.9	AS-346
MCRA-V160	140.6	152.6	3.9	AS-361

## KF Mesh Centering Rings, Viton O'ring - Europe

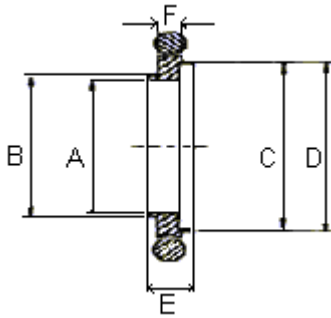


Model No.	A	B	C	O'ring (AS-568)
MCRE-V16	9.5	17	3.9	AS-314
MCRE-V25	19.5	26	3.9	AS-320
MCRE-V40	32	41	3.9	AS-326
MCRE-V50	43	52	3.9	AS-330
MCRE-V63	61	70	3.9	AS-336
MCRE-V80	74	83	3.9	AS-340
MCRE-V100	90	102	3.9	AS-346
MCRE-V160	141	153	3.9	AS-361

# VACUUM FITTINGS

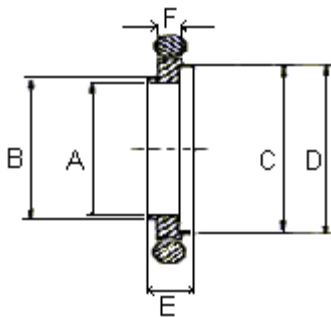
WELLGROW INDUSTRIES CORP.

## KF Centering Ring Adaptors, Viton O'ring



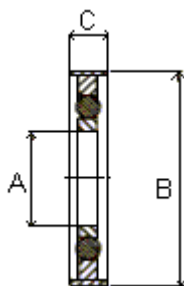
Model No.	A	B	C	D	E	F	O'ring (AS-568)
CA-V10/16	10	12	16	17	8	3.9	AS-314
CA-V20/25	20	22	25	26	8	3.9	AS-320
CA-V32/40	32	34	40	41	8	3.9	AS-326
CA-V40/50	40	41	50	52	8	3.9	AS-330

## KF Centering Ring Adaptors, NBR O'ring



Model No.	A	B	C	D	E	F	O'ring (AS-568)
CA-N10/16	10	12	16	17	8	3.9	AS-314
CA-N20/25	20	22	25	26	8	3.9	AS-320
CA-N32/40	32	34	40	41	8	3.9	AS-326
CA-N40/50	40	41	50	52	8	3.9	AS-330

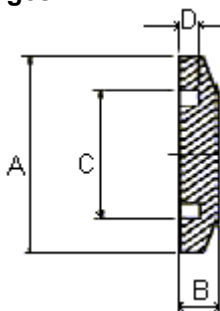
## KF Outer Centering Rings, Viton O'ring



Model No.	A	B	C	O'ring
OCR-V16	16	32.5	8	5018
OCR-V25	25	42.5	8	5028
OCR-V40	40	57.5	8	5042
OCR-V50	50	77.5	8	AS-330

Aluminum outer, SUS304 inner.

## KF Blank Flanges

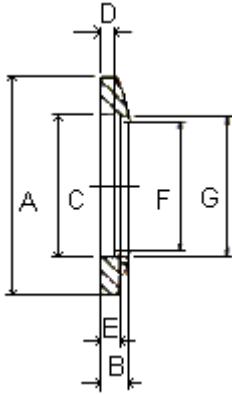


Model No.	A	B	C	D
BL-10	30	5	12.2	2.5
BL-16	30	5	17.2	2.5
BL-25	40	5	26.2	2.5
BL-40	55	5	41.2	2.5
BL-50	75	5	52.2	2.5

# VACUUM FITTINGS

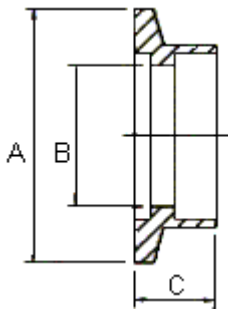
WELLGROW INDUSTRIES CORP.

## KF Bored Flanges



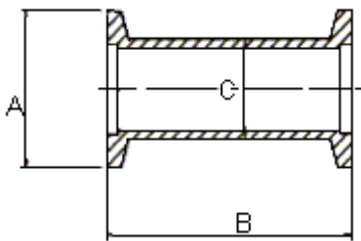
Model No.	A	B	C	D	E	F	G
BF10-50	30	5	12.2	2.5	3.8	10.7	12.9
BF16-75	30	5	17.2	2.5	3.8	16.4	19.3
BF25-100	40	5	26.2	2.5	3.8	23.8	25.7
BF40-150	55	5	41.2	2.5	3.8	36	38.4
BF50-200	75	5	52.2	2.5	3.8	49.2	51

## KF Socket Weld Flanges



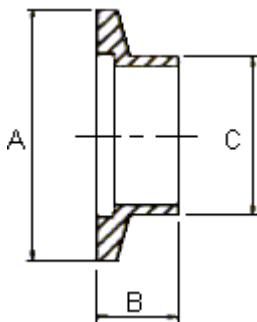
Model No.	A	B	C
SWF-10	30	9.4	12.7
SWF-16	30	15.7	12.7
SWF-25	39.9	22.1	12.7
SWF-40	54.9	34.8	12.7
SWF-50	74.9	47.5	12.7

## KF Nipples



Model No.	A	B	C
NI-16	30	80	19.05
NI-25	40	100	25.4
NI-40	55	130	38.1
NI-50	75	140	50.8

## KF Butt Weld Flanges (Half Nipples) - USA

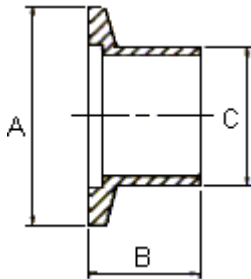


Model No.	A	B	C
SWFA-10	30	12.7	12.7
SWFA-16	30	12.7	19.05
SWFA-25	40	12.7	25.4
SWFA-40	55	19.1	38.1
SWFA-50	75	19.1	50.8

# VACUUM FITTINGS

WELLGROW INDUSTRIES CORP.

## KF Butt Weld Flanges (Half Nipples) – Europe



Model No.	A	B	C
SWFE-10	30	20	14
SWFE-16	30	20	20
SWFE-25	40	20	28
SWFE-40	55	20	45
SWFE-50	75	20	57

## KF Butt Weld Flanges (Half Nipples) – Japan

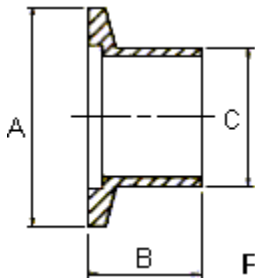


Figure 1

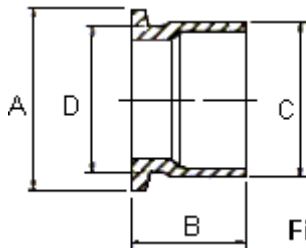
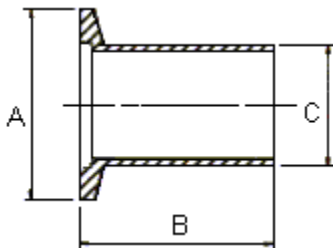


Figure 2

Model No.	A	B	C	D	Figure
SWFJ-25-27	40	20	27.2	--	1
SWFJ-25-34	40	20	34	32	2
SWFJ-40-42	55	20	42.7	--	1
SWFJ-40-48	55	20	48.6	45	2
SWFJ-50-60	75	20	60.5	--	1

## KF Butt Weld Flanges (Half Nipples) – USA



Model No.	A	B	C
LWFA-10	30	40	12.7
LWFA-16	30	40	19.05
LWFA-25	40	40	25.4
LWFA-40	55	40	38.1
LWFA-50	75	40	50.8



# VACUUM FITTINGS

WELLGROW INDUSTRIES CORP.

## KF Butt Weld Flanges (Half Nipples) – Japan

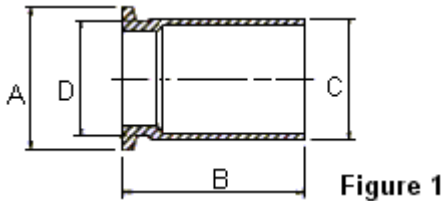


Figure 1

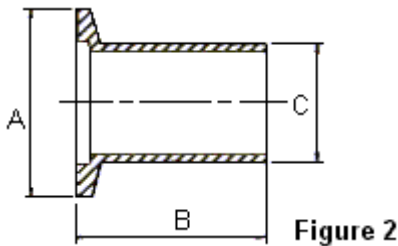
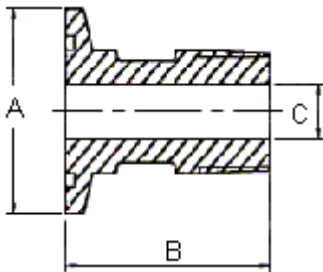


Figure 2

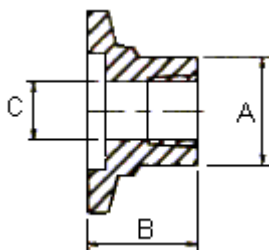
Model No.	A	B	C	D	Figure
LWFJ-25	40	50	34	32	1
LWFJ-40	55	50	48.6	45	1
LWFJ-50	75	50	60.5		2

## KF Male PT Adaptors



Model No.	A	B	C	PT
MA16-PT1/8	30	35	4.7	1/8"
MA16-PT1/4	30	35	7.1	1/4"
MA25-PT1/8	40	35	4.7	1/8"
MA25-PT1/4	40	35	7.1	1/4"
MA25-PT1/2	40	35	11.9	1/2"
MA25-PT3/4	40	35	15.9	3/4"
MA40-PT1/4	55	35	7.1	1/4"
MA40-PT1/2	55	35	11.9	1/2"
MA40-PT3/4	55	35	15.9	3/4"
MA40-PT1	55	35	22.2	1"
MA50-PT1/4	75	35	7.1	1/4"
MA50-PT1/2	75	35	11.9	1/2"
MA50-PT3/4	75	35	15.9	3/4"
MA50-PT1	75	35	22.2	1"

## KF Female PT Adaptors

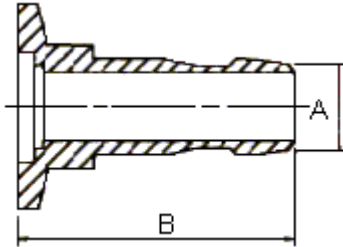


Model No.	A	B	C
FA16-PT1/8	15.8	12.7	17
FA25-PT1/8	22.4	12.7	19
FA40-PT1/8	31.8	12.7	32
FA50-PT1/8	44.5	15.8	46
FA16-PT1/4	15.8	12.7	17
FA25-PT1/4	22.4	12.7	19
FA40-PT1/4	31.8	12.7	32
FA50-PT1/4	44.5	15.8	46

# VACUUM FITTINGS

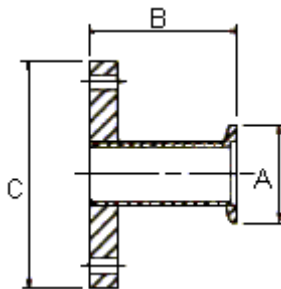
WELLGROW INDUSTRIES CORP.

## KF Rubber Hose Adaptors



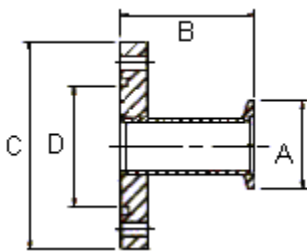
Model No.	A	B
RHA-10	12.7	40
RHA-16	19.05	40
RHA-25	25.4	40
RHA-40	38.1	50
RHA-50	50.8	50

## KF To ASA Tubulated Adaptors



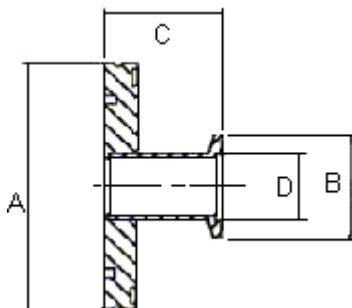
Model No.	A	B	C
TA40-A38	55	42	127
TA40-A50	55	42	152
TA40-A75	55	42	191
TA50-A38	75	42	127
TA50-A50	75	42	152
TA50-A75	75	42	191

## KF To ASA Tubulated Adaptors With Groove O'ring



Model No.	A	B	C	D
TA40-A50G	55	42	152	88.5
TA40-A75G	55	42	191	114.5
TA50-A50G	75	42	152	88.5
TA50-A75G	75	42	191	114.5

## KF TO ISO Tubulated Adaptors

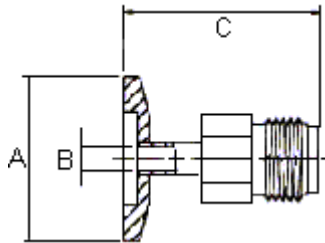


Model No.	A	B	C	D
TA25-ISO63	95	40	42	25.4
TA25-ISO63	95	55	42	38.1
TA25-ISO63	95	75	42	50.8
TA25-ISO80	110	55	42	38.1
TA25-ISO80	110	75	42	50.8
TA25-ISO100	130	55	42	38.1
TA25-ISO100	130	75	42	50.8

# VACUUM FITTINGS

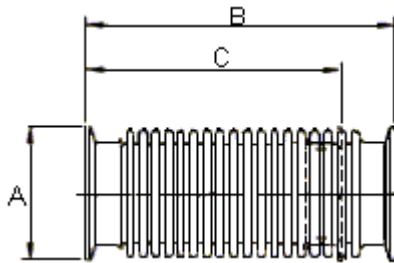
WELLGROW INDUSTRIES CORP.

## KF TO VCR Male Adaptors



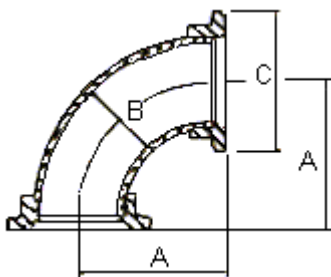
Model No.	A	B	C	VCR
MA16-VCR1/4	30	4.4	33	1/4"
MA16-VCR1/2	30	10.4	40	1/2"
MA25-VCR1/4	40	4.4	33	1/4"
MA25-VCR1/2	40	10.4	40	1/2"
MA40-VCR1/4	55	4.4	33	1/4"
MA40-VCR1/2	55	10.4	40	1/2"
MA50-VCR1/4	75	4.4	33	1/4"
MA50-VCR1/2	75	10.4	40	1/2"

## KF Hydroformed Bellow Connections



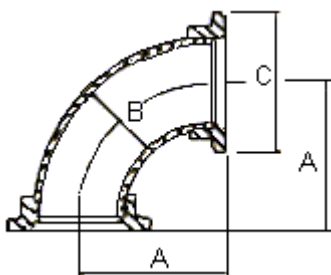
Model No.	A	B	C
BE-10-100	30	100	80
BE-16-100	30	100	80
BE-25-100	40	100	80
BE-40-100	55	100	80
BE-50-100	75	100	80

## KF 90° Elbows – USA



Model No.	A	B	C
E90A-16	38.1	19.05	30
E90A-25	51.8	25.4	40
E90A-40	62.5	38.1	55
E90A-50	81.5	50.8	75

## KF 90° Elbows – Europe

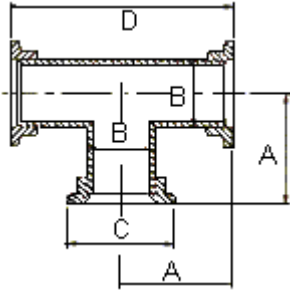


Model No.	A	B	C
E90E-16	40	19.05	30
E90E-25	50	25.4	40
E90E-40	65	38.1	55
E90E-50	70	50.8	75

# VACUUM FITTINGS

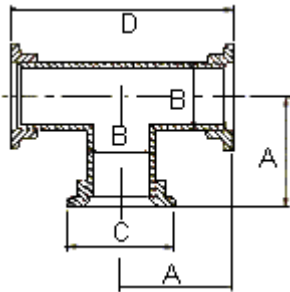
WELLGROW INDUSTRIES CORP.

## KF Tees – USA



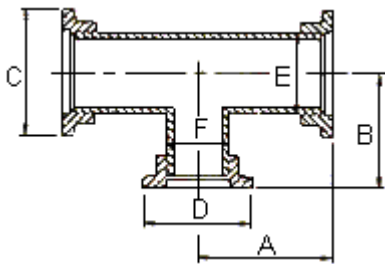
Model No.	A	B	C	D
TA-16	38.1	19.05	30	76.2
TA-25	51.8	25.4	40	103.6
TA-40	62.5	38.1	55	125
TA-50	81.5	50.8	75	163

## KF Tees – Europe



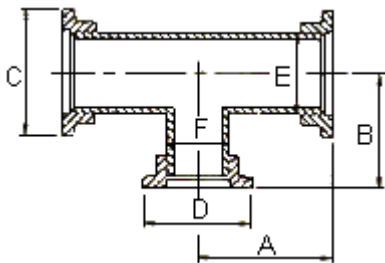
Model No.	A	B	C
TE-16	40	19.05	30
TE-25	50	25.4	40
TE-40	65	38.1	55
TE-50	81.5	50.8	75

## KF Unequal Tees – USA



Model No.	A	B	C	D	E	F
UTA25-16	51.8	37.3	40	30	25.4	19.05
UTA40-16	62.5	51.8	55	30	38.1	19.05
UTA40-25	62.5	61	55	40	38.1	25.4
UTA50-16	81.5	58.2	75	30	50.8	19.05
UTA50-25	81.5	72.1	75	40	50.8	25.4
UTA50-40	81.5	70	75	55	50.8	38.1

## KF Unequal Tees – Europe

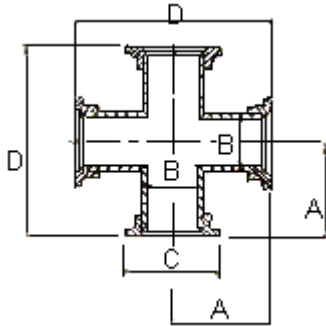


Model No.	A	B	C	D	E	F
UTE25-16	60	40	40	30	25.4	19.05
UTE40-16	65	40	55	30	38.1	19.05
UTE40-25	65	50	55	40	38.1	25.4
UTE50-16	70	50	75	30	50.8	19.05
UTE50-25	70	65	75	40	50.8	25.4
UTE50-40	70	65	75	55	50.8	38.1

# VACUUM FITTINGS

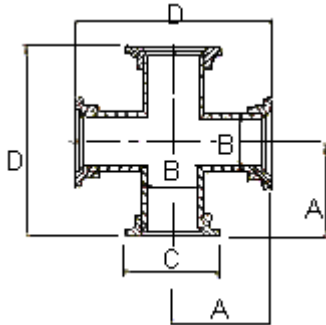
WELLGROW INDUSTRIES CORP.

## KF 4-Way Crosses – USA



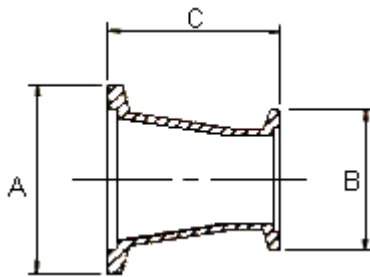
Model No.	A	B	C	D
4CA-16	38.1	19.05	30	76.2
4CA-25	51.8	25.4	40	103.6
4CA-40	62.5	38.1	55	125
4CA-50	81.5	50.8	75	163

## KF 4-Way Crosses – Europe



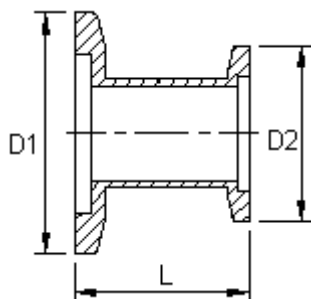
Model No.	A	B	C	D
4CE-16	40	19.05	30	80
4CE-25	50	25.4	40	100
4CE-40	65	38.1	55	130
4CE-50	70	50.8	75	140

## KF Conical Reducing Adaptors



Model No.	A	B	C
RA16-25	40	30	40
RA16-40	55	30	40
RA25-40	75	40	40
RA16-50	75	55	40
RA25-50	75	30	40
RA40-50	55	40	40

## KF Straight Reducers

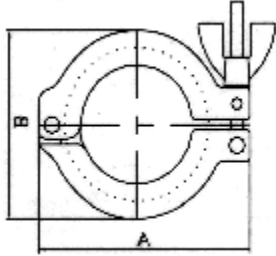


Model No.	D1	D2	L
SR16-25	KF25	KF16	39.9
SR16-40	KF40	KF16	39.9
SR25-40	KF40	KF25	39.9
SR16-50	KF50	KF16	39.9
SR25-50	KF50	KF25	39.9
SR40-50	KF50	KF40	39.9

# VACUUM FITTINGS

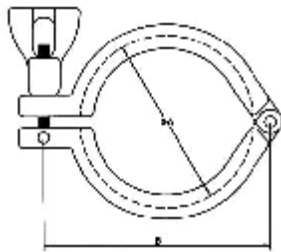
WELLGROW INDUSTRIES CORP.

## Aluminum Swing Clamp Single Pin



Model No.	SIZE	A	B
CP-16	KF10/16	56	40
CP-25	KF20/25	70	53
CP-40	KF32/40	85	68
CP-50	KF50	108	88

## 304 Swing Clamp Single Pin



Model No.	SIZE	A	B
CP-16	KF10/16	33.0	52.2
CP-25	KF20/25	43.0	68.8
CP-40	KF32/40	60.0	76.7
CP-50	KF50	77.8	99.6

# VACUUM FITTINGS

WELLGROW INDUSTRIES CORP.

## Vacuum Components – ISO Series

### ISO Single Wall Clamp Aluminum



Model No.	Suitable Flange	A	B	C
ISC-AL-63	ISO63	22.5	M8	35
ISC-AL-63	ISO80	22.5	M8	35
ISC-AL-63	ISO100	22.5	M8	35
ISC-AL-160	ISO160	23	M10	40
ISC-AL-160	ISO200	23	M10	40
ISC-AL-160	ISO250	23	M10	40
ISC-AL-320	ISO320	36.5	M12	55
ISC-AL-320	ISO400	36.5	M12	55
ISC-AL-320	ISO500	36.5	M12	55

### ISO Single Wall Clamp Steel (Zinc Plating)



Model No.	Suitable Flange	A	B	C
ISC-SZ-63	ISO63	22.5	M8	35
ISC-SZ-63	ISO80	22.5	M8	35
ISC-SZ-63	ISO100	22.5	M8	35
ISC-SZ-160	ISO160	23	M10	40
ISC-SZ-160	ISO200	23	M10	40
ISC-SZ-160	ISO250	23	M10	40
ISC-SZ-320	ISO320	36.5	M12	55
ISC-SZ-320	ISO400	36.5	M12	55
ISC-SZ-320	ISO500	36.5	M12	55
ISC-SZ-630	ISO630	41.5	M12	60

### ISO Single Wall Clamp SS304



Model No.	Suitable Flange	A	B	C
ISC-63	ISO63	22.5	M8	35
ISC-63	ISO80	22.5	M8	35
ISC-63	ISO100	22.5	M8	35
ISC-160	ISO160	23	M10	40
ISC-160	ISO200	23	M10	40
ISC-160	ISO250	23	M10	40
ISC-320	ISO320	36.5	M12	55
ISC-320	ISO400	36.5	M12	55
ISC-320	ISO500	36.5	M12	55
ISC-630	ISO630	41.5	M12	60

# VACUUM FITTINGS

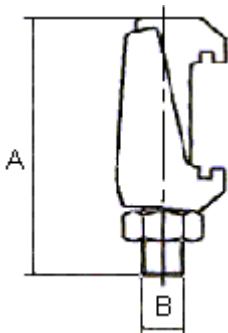
WELLGROW INDUSTRIES CORP.

## ISO Double Wall Clamp Aluminum



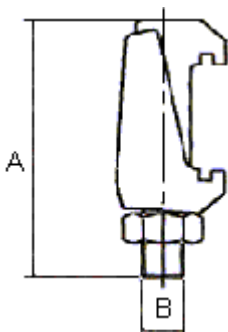
Model No.	Suitable Flange	A	B	Q'TY
IDC-AL-63	ISO63	45	M8	4
IDC-AL-63	ISO80	45	M8	4
IDC-AL-63	ISO100	45	M8	4
IDC-AL-160	ISO160	45	M8	4
IDC-AL-160	ISO200	45	M8	6
IDC-AL-160	ISO250	45	M8	6
IDC-AL-320	ISO320	45	M8	8
IDC-AL-320	ISO400	45	M8	8
IDC-AL-320	ISO500	45	M8	12

## ISO Double Claw Clamp Steel (Zinc Plated)



Model No.	Suitable Flange	A	B	Q'TY
IDC-SZ-63/250	ISO63	60	M10	4
IDC-SZ-63/250	ISO80	60	M10	4
IDC-SZ-63/250	ISO100	60	M10	4
IDC-SZ-63/250	ISO160	60	M10	4
IDC-SZ-63/250	ISO200	60	M10	6
IDC-SZ-63/250	ISO250	60	M10	6
IDC-SZ-320/500	ISO320	76	M12	8
IDC-SZ-320/500	ISO400	76	M12	8
IDC-SZ-320/500	ISO500	76	M12	12
IDC-SZ-630	ISO630	86	M12	12

## ISO Double Claw Clamp SS316



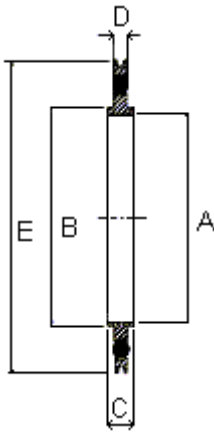
Model No.	Suitable Flange	A	B	Q'TY
IDC-63/250	ISO63	60	M10	4
IDC-63/250	ISO80	60	M10	4
IDC-63/250	ISO100	60	M10	4
IDC-63/250	ISO160	60	M10	4
IDC-63/250	ISO200	60	M10	6
IDC-63/250	ISO250	60	M10	6
IDC-320/500	ISO320	76	M12	8
IDC-320/500	ISO400	76	M12	8
IDC-320/500	ISO500	76	M12	12
IDC-630	ISO630	86	M12	12



# VACUUM FITTINGS

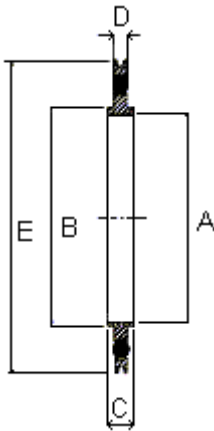
WELLGROW INDUSTRIES CORP.

## ISO Outer Ring, Centering Rings, Viton O'ring - USA



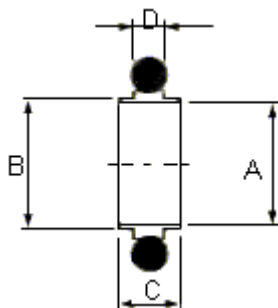
Model No.	A	B	C	D	E	O'ring (AS-568)
IOCR-V63	67	69.6	8	3.9	91	AS-336
IOCR-V80	80	82.6	8	3.9	104	AS-340
IOCR-V100	100	101.6	8	3.9	123	AS-346
IOCR-V160	150	152.6	8	3.9	170	AS-361
IOCR-V200	210	212.6	8	3.9	234	AS-371
IOCR-V250	257.5	260.4	8	3.9	285	AS-378
IOCR-V320	312	317.3	12	5.6	340	AS-454
IOCR-V400	394	399.2	12	5.6	416	AS-462
IOCR-V500	494	500.2	12	5.6	555	AS-470

## ISO Outer Ring, Centering Rings, NBR O'ring - USA



Model No.	A	B	C	D	E	O'ring (AS-568)
IOCR-N63	67	69.6	8	3.9	91	AS-336
IOCR-N80	80	82.6	8	3.9	104	AS-340
IOCR-N100	100	101.6	8	3.9	123	AS-346
IOCR-N160	150	152.6	8	3.9	170	AS-361
IOCR-N200	210	212.6	8	3.9	234	AS-371
IOCR-N250	257.5	260.4	8	3.9	285	AS-378
IOCR-N320	312	317.3	12	5.6	340	AS-454
IOCR-N400	394	399.2	12	5.6	416	AS-462
IOCR-N500	494	500.2	12	5.6	555	AS-470

## ISO Centering Rings, Viton O'ring - USA

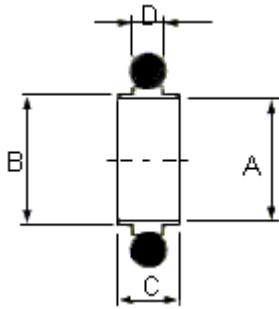


Model No.	A	B	C	D	O'ring
ICR-V63	67	69.5	8	3.9	AS-336
ICR-V80	80	82.6	8	3.9	AS-341
ICR-V100	100	101.6	8	3.9	AS-347
ICR-V160	150	152.6	8	3.9	AS-362
ICR-V200	210	212.6	8	3.9	AS-371
ICR-V250	257.5	260.4	8	3.9	AS-377
ICR-V320	312	317.3	12	5.6	AS-454
ICR-V400	394	399.2	12	5.6	AS-462
ICR-V500	494	500.2	12	5.6	AS-469

# VACUUM FITTINGS

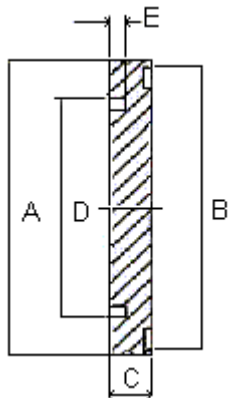
WELLGROW INDUSTRIES CORP.

## ISO Centering Rings, NBR O'ring – USA



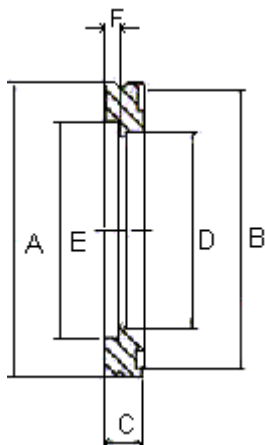
Model No.	A	B	C	D	O'ring
ICR-N63	67	69.5	8	3.9	AS-336
ICR-N80	80	82.6	8	3.9	AS-341
ICR-N100	100	101.6	8	3.9	AS-347
ICR-N160	150	152.6	8	3.9	AS-362
ICR-N200	210	212.6	8	3.9	AS-371
ICR-N250	257.5	260.4	8	3.9	AS-377
ICR-N320	312	317.3	12	5.6	AS-454
ICR-N400	394	399.2	12	5.6	AS-462
ICR-N500	494	500.2	12	5.6	AS-469

## ISO Blank Flange



Model No.	A	B	C	D	E
IBL-63	95	90	12	70	4.5
IBL-80	110	105	12	83	4.5
IBL-100	130	125	12	102	4.5
IBL-160	180	175	12	153	4.5
IBL-200	240	235	12	213	4.5
IBL-250	290	285	12	261	4.5
IBL-320	370	365	17	318	4.5
IBL-400	450	445	17	400	4.5
IBL-500	550	545	17	501	4.5

## ISO Bored Flange

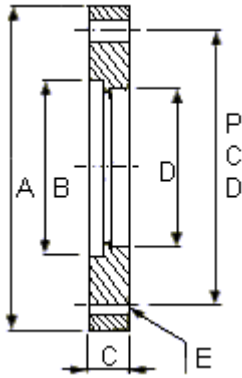


Model No.	A	B	C	D	E	F
IBF-63	95	90	12	63.7	70	4.5
IBF-80	110	105	12	76.4	83	4.5
IBF-100	130	125	12	101.8	102	4.5
IBF-160	180	175	12	152.9	153	4.5
IBF-200	240	235	12	203.7	213	4.5
IBF-250	290	285	12	254.5	261	4.5
IBF-320	370	365	17	305.3	318	4.5
IBF-400	450	445	17	406.9	400	4.5
IBF-500	550	545	17	508.8	501	4.5

# VACUUM FITTINGS

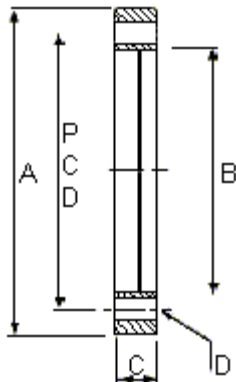
WELLGROW INDUSTRIES CORP.

## ISO Bolted Flange



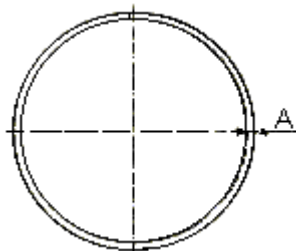
Model No.	A	B	C	D	E	P.C.D.
IBTF-63	130	70	12	63.7	9x4	110
IBTF-80	145	83	12	76.4	9x8	125
IBTF-100	165	102	12	101.8	9x8	145
IBTF-160	225	153	16	152.9	11x8	200
IBTF-200	285	213	16	203.7	11x12	260
IBTF-250	335	261	16	254.5	11x12	310
IBTF-320	425	318	20	305.3	14x12	395
IBTF-400	510	400	20	406.9	14x16	480
IBTF-500	510	400	20	406.9	14x16	480

## ISO Rotatable Bolt Rings



Model No.	A	B	C	D	P.C.D.
IRBR-63	130	98.5	12	9x4	110
IRBR-80	145	113.5	12	9x8	125
IRBR-100	165	133.5	12	9x8	145
IRBR-160	225	185.7	16	11x8	200
IRBR-200	285	245.7	16	11x12	260
IRBR-250	335	295.7	16	11x12	310
IRBR-320	425	375.8	20	14x12	395
IRBR-400	510	458.8	20	14x16	480
IRBR-500	610	558.8	20	14x16	580

## ISO Split Retainer Rings

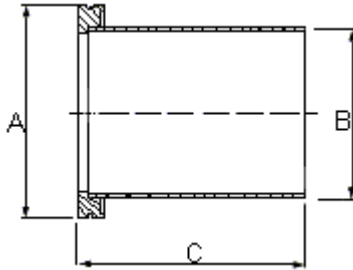


Model No.	A	Fit Flange
ISR-63	3	ISO63
ISR-80	3	ISO80
ISR-100	3	ISO100
ISR-160	5	ISO160
ISR-200	5	ISO200
ISR-250	5	ISO250
ISR-320	5	ISO320
ISR-400	8	ISO400
ISR-500	8	ISO500

# VACUUM FITTINGS

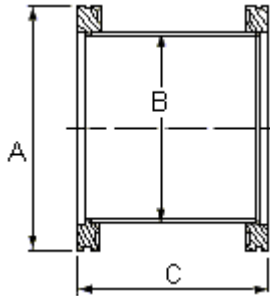
WELLGROW INDUSTRIES CORP.

## ISO Butt Weld Flanges (Half Nipples)



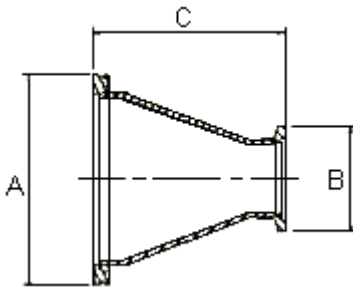
Model No.	A	B	C
IWF-63	95	63.5	100
IWF-80	110	76.2	100
IWF-100	130	101.6	100
IWF-160	180	152.4	100
IWF-200	240	203.2	100
IWF-250	290	254	100
IWF-320	370	304.8	100
IWF-400	450	406.4	100
IWF-500	550	508	100

## ISO Full Nipples



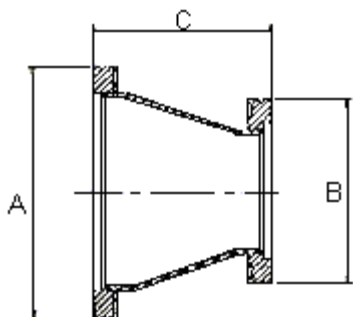
Model No.	A	B	C
IN-63	95	63.5	100
IN-80	110	76.2	100
IN-100	130	101.6	100
IN-160	180	152.4	100
IN-200	240	203.2	100
IN-250	290	254	100
IN-320	370	304.8	100
IN-400	450	406.4	100
IN-500	550	508	100

## ISO TO KF Conical Reducing Adaptors



Model No.	A	B	C
RA40-ISO80	110	55	63
RA40-ISO100	130	55	63
RA50-ISO80	110	75	63
RA50-ISO100	130	75	63

## ISO Conical Reducing Adaptors

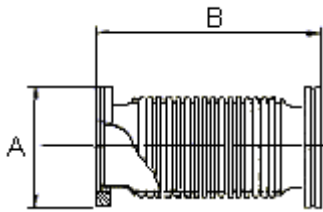


Model No.	A	B	C
IRA-80-100	110	130	63

# VACUUM FITTINGS

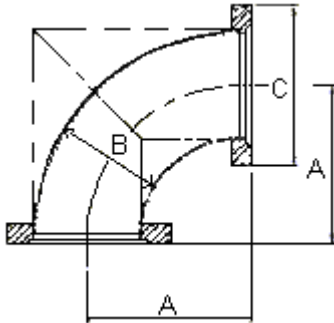
WELLGROW INDUSTRIES CORP.

## ISO Hydroformed Bellow Connections



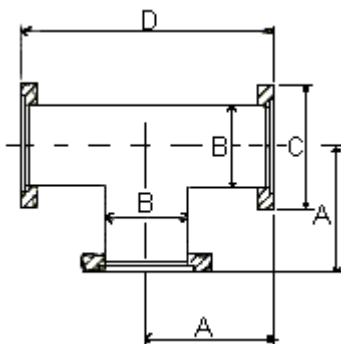
Model No.	A	B
IBE-63-180	95	180
IBE-80-180	110	180
IBE-100-180	130	180
IBE-160-180	180	180

## ISO 90° Elbows – USA



Model No.	A	B	C
IE90-63	86.4	63.5	95
IE90-80	101.6	76.2	110
IE90-100	130	101.6	130
IE90-160	160.2	152.4	180
IE90-200	196.8	203.2	240
IE90-250	247.65	254	290

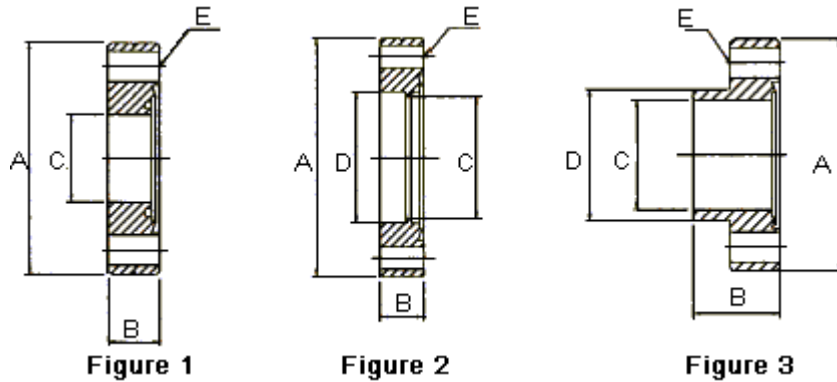
## ISO Tees – USA



Model No.	A	B	C	D
IT-63	86.4	63.5	95	163.6
IT-80	101.6	76.2	110	203.2
IT-100	130	101.6	130	260
IT-160	160.2	152.4	180	320.4
IT-200	196.8	203.2	240	393.6
IT-250	247.65	254	290	495.3

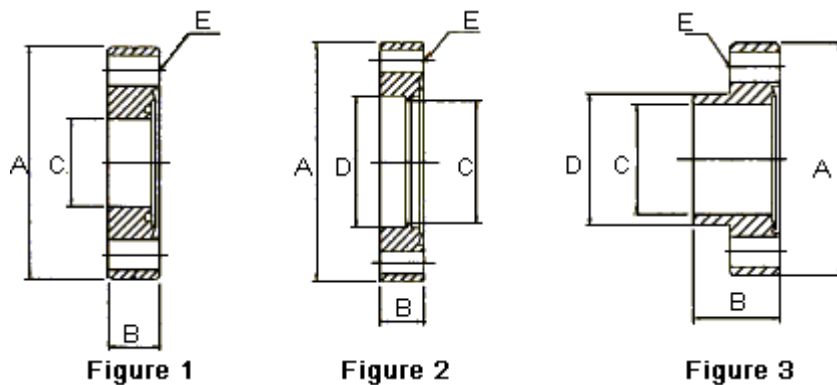
## Vacuum Components – CF Series

### CF16 Bored Flanges Fixed



Model No.	A	B	C	D	E x No.	Figure
BF-CF16-7	33.8	7.5	6.5	--	4.4X6	1
BF-CF16-12	33.8	7.5	9.5	12.9	4.4X6	2
BF-CF16-19	33.8	7.5	16	19.15	4.4X6	2
BF-CF16-N7	33.8	12.7	4.5	6.35	4.4X6	3
BF-CF16-N12	33.8	12.7	9.5	12.7	4.4X6	3
BF-CF16-N19	33.8	12.7	16	19.05	4.4X6	3

### CF16 Bored Flanges (Tapped Bolt Holes)



Model No.	A	B	C	D	E x No.	Figure
BF-CF16-T7	33.8	7.5	6.5	--	M4x6	1
BF-CF16-T12	33.8	7.5	9.5	12.9	M4x6	2
BF-CF16-T19	33.8	7.5	16	19.15	M4x6	2
BF-CF16-TN7	33.8	12.7	4.5	6.35	M4x6	3
BF-CF16-TN12	33.8	12.7	9.5	12.7	M4x6	3
BF-CF16-TN19	33.8	12.7	16	19.05	M4x6	3

# VACUUM FITTINGS

WELLGROW INDUSTRIES CORP.

## CF16 Bored Flanges - Rotatable

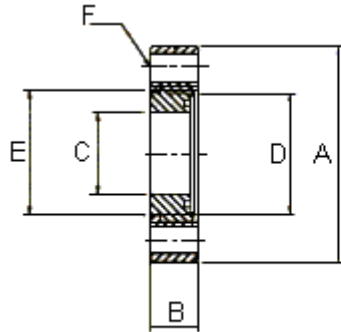


Figure 1

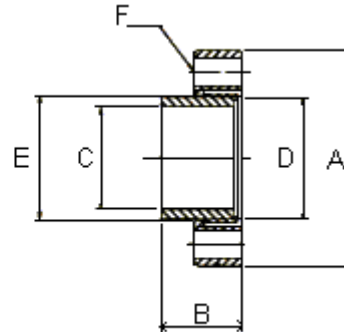


Figure 2

Model No.	A	B	C	D	E	F x No.	Figure
BF-CR16-7	33.8	7.5	4.5	6.5	6.6	4.4x6	1
BF-CR16-12	33.8	7.5	9.5	12.9	13	4.4x6	1
BF-CR16-19	33.8	7.5	16	19.05	19.15	4.4x6	1
BF-CR16-N7	33.8	12.7	4.5	6.35	6.45	4.4x6	2
BF-CR16-N12	33.8	12.7	9.5	12.7	13	4.4x6	2
BF-CR16-N19	33.8	12.7	16	19.05	19.15	4.4x6	2

## CF16 Bored Flanges (Tapped Bolt Holes)

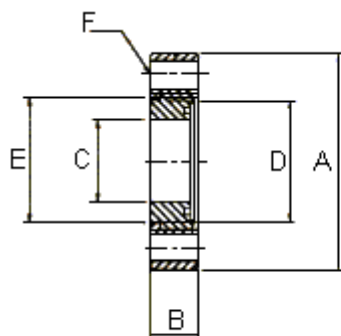


Figure 1

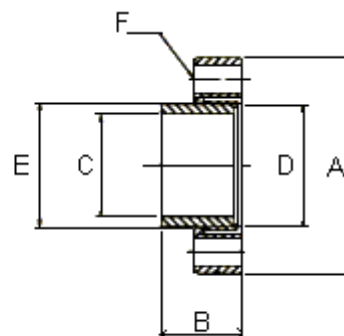


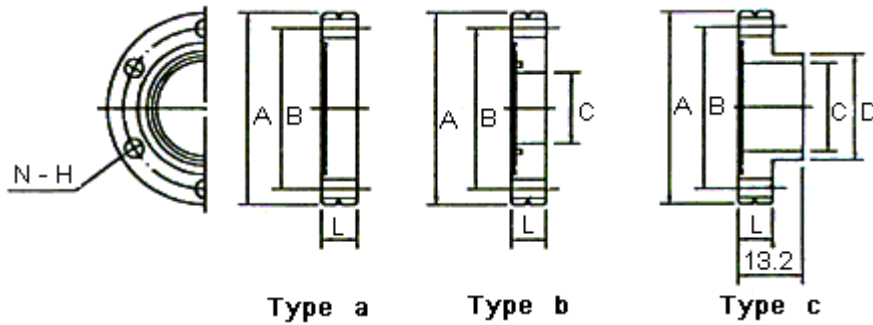
Figure 2

Model No.	A	B	C	D	E	F x No.	Figure
BF-CR16-T7	33.8	7.5	4.5	6.5	6.6	M4x6	1
BF-CR16-T12	33.8	7.5	9.5	12.9	13	M4x6	1
BF-CR16-T19	33.8	7.5	16	19.05	19.15	M4x6	1
BF-CR16-TN7	33.8	12.7	4.5	6.35	6.45	M4x6	2
BF-CR16-TN12	33.8	12.7	9.5	12.7	13	M4x6	2
BF-CR16-TN19	33.8	12.7	16	19.05	19.15	M4x6	2

# VACUUM FITTINGS

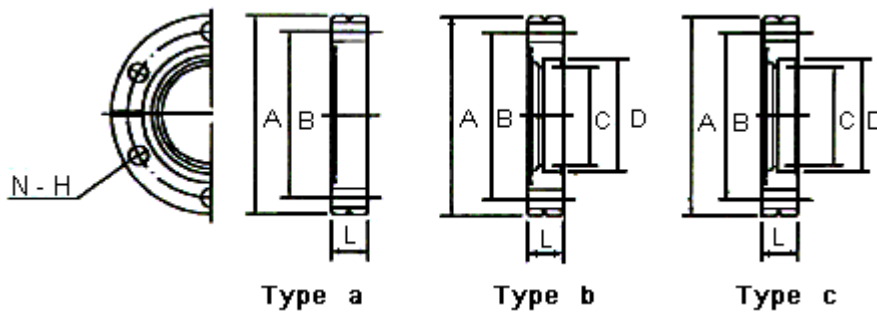
WELLGROW INDUSTRIES CORP.

## 34 O.D. CF Flanges – Nonrotatable



Model No.	Type	A	B	C	D	L	N	H
FN3-1	a	34	27	--	--	7.5	6	4.5
FN3-2	b	34	27	12.8	--	7.5	6	4.5
FN3-3	c	34	27	16	19.2	7.5	6	4.5
FN3-4	c	34	27	16	19.2	7.5	6	M4

## 70 O.D. CF Flanges - Nonrotatable



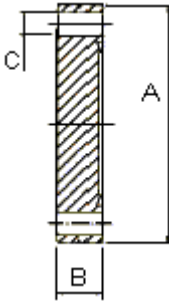
Model No.	Type	A	B	C	D	L	N	H
FN7-1	a	70	58.7	--	--	12.7	6	6.7
FN7-2	b	70	58.7	17	20	12.7	6	6.7
FN7-3	b	70	58.7	23.5	26.5	12.7	6	6.7
FN7-4	b	70	58.7	30	33	12.7	6	6.7
FN7-5	b	70	58.7	35.5	39	12.7	6	6.7
FN7-6	b	70	58.7	38.5	42	12.7	6	6.7
FN7-7	c	70	58.7	38.5	42	12.7	6	M6



# VACUUM FITTINGS

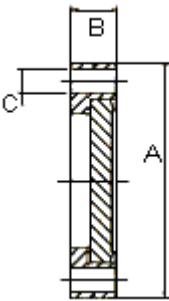
WELLGROW INDUSTRIES CORP.

## CF Blank Flanges – Fixed



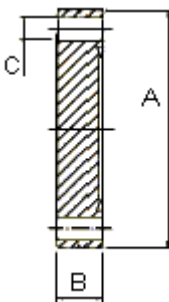
Model No.	A	B	C x No.
BL-CF16	33.8	7.5	4.4 x 6
BL-CF35	69.5	12.7	6.7 x 6
BL-CF63	113.6	18	8.4 x 8
BL-CF100	151.6	20	8.4 x 16
BL-CF150	202.5	22	8.4 x 20
BL-CF200	253.2	24.7	8.4 x 24
BL-CF250	336.55	28.5	10.3 x 30
BL-CF300	355.6	28.5	10.3 x 30
BL-CF350	419.1	28.5	10.3 x 36

## CF Blank Flanges – Rotatable



Model No.	A	B	C x No.
BL-CR16	33.8	7.5	4.4 x 6
BL-CR35	69.5	12.7	6.7 x 6
BL-CR63	113.6	19	8.4 x 8
BL-CR100	151.6	21.5	8.4 x 16
BL-CR150	202.5	24	8.4 x 20
BL-CR200	253.2	25	8.4 x 24
BL-CR250	336.55	28.5	10.3 x 30
BL-CR300	355.6	28.5	10.3 x 30
BL-CR350	419.1	28.5	10.3 x 36

## CF Blank Flanges (Tapped Bolt Holes)

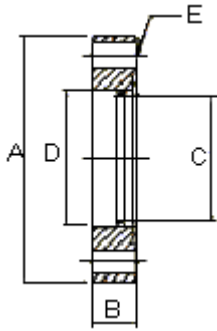


Model No.	A	B	C x No.
BL-CFT16	33.8	7.5	M4 x 6
BL-CFT35	69.5	12.7	M6 x 6
BL-CFT63	113.6	18	M8 x 8
BL-CFT100	151.6	20	M8 x 16
BL-CFT150	202.5	22	M8 x 20
BL-CFT200	253.2	24.7	M8 x 24
BL-CFT250	336.55	28.5	M10 x 30
BL-CFT300	355.6	28.5	M10 x 30
BL-CFT350	419.1	28.5	M10 x 36

# VACUUM FITTINGS

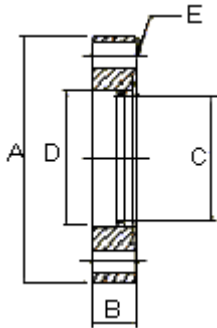
WELLGROW INDUSTRIES CORP.

## CF Bored Flanges – Fixed



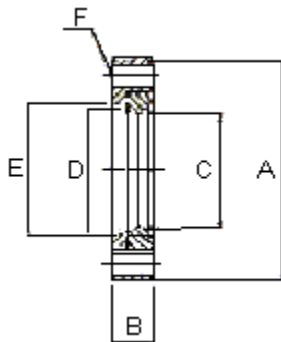
Model No.	A	B	C	D	E x No.
BF-CF35-25	69.5	12.7	23.4	25.6	6.7 x 6
BF-CF35-38	69.5	12.7	35.5	38.3	6.7 x 6
BF-CF35-41	69.5	12.7	40.1	41.3	6.7 x 6
BF-CF63-51	113.6	18	49.6	51.1	8.4 x 8
BF-CF63-63	113.6	18	60.4	63.7	8.4 x 8
BF-CF100-100	151.6	20	97.5	101.8	8.4 x 16
BF-CF150-150	202.5	22	147.6	152.8	8.4 x 20
BF-CF200-200	253.2	24.7	198.9	203.7	8.4 x 24
BF-CF250-250	336.55	28.5	250	254.5	10.3 x 30
BF-CF300-300	355.6	28.5	298.45	305.4	10.3 x 30
BF-CF350-350	419.1	28.5	349.25	356.1	10.3 x 36

## CF Bored Flanges (Tapped Bolt Holes)



Model No.	A	B	C	D	E x No.
BF-CFT35-25	69.5	12.7	23.4	25.6	M6 x 6
BF-CFT35-38	69.5	12.7	35.5	38.3	M6 x 6
BF-CFT35-41	69.5	12.7	40.1	41.3	M6 x 6
BF-CFT63-51	113.6	18	49.6	51.1	M8 x 8
BF-CFT63-63	113.6	18	60.4	63.7	M8 x 8
BF-CFT100-100	151.6	20	97.5	101.8	M8 x 16
BF-CFT150-150	202.5	22	147.6	152.8	M8 x 20
BF-CFT200-200	253.2	24.7	198.9	203.7	M8 x 24
BF-CFT250-250	336.55	28.5	250	254.5	M10 x 30
BF-CFT300-300	355.6	28.5	298.45	305.4	M10 x 30
BF-CFT350-350	419.1	28.5	349.25	356.1	M10 x 36

## CF Bored Flanges - Rotatable

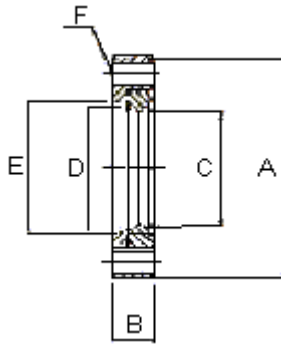


Model No.	A	B	C	D	E	F x No.
BF-CR35-25	69.5	12.7	23.4	25.6	39	6.7 x 6
BF-CR35-38	69.5	12.7	35.5	38.3	39	6.7 x 6
BF-CR35-41	69.5	12.7	40.1	41.3	39	6.7 x 6
BF-CR63-51	113.6	19	49.6	51.1	67	8.4 x 8
BF-CR63-63	113.6	19	60.4	63.7	67	8.4 x 8
BF-CR100-100	151.6	21.5	97.5	101.8	105	8.4 x 16
BF-CR150-150	202.5	24	147.6	152.8	155.5	8.4 x 20
BF-CR200-200	253.2	25	198.9	203.7	206.5	8.4 x 24
BF-CR250-250	336.55	28.5	250	254.5	258.5	10.3 x 30
BF-CR300-300	355.6	28.5	298.45	305.4	308.6	10.3 x 30
BF-CR350-350	419.1	28.5	349.25	356.1	358.7	10.3 x 36

# VACUUM FITTINGS

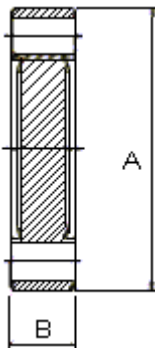
WELLGROW INDUSTRIES CORP.

## CF Bored Flanges (Tapped Bolt Holes) – Rotatable



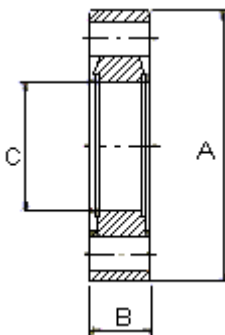
Model No.	A	B	C	D	E	F x No.
BF-CRT35-25	69.5	12.7	23.4	25.6	39	M6 x 6
BF-CRT35-38	69.5	12.7	35.5	38.3	39	M6 x 6
BF-CRT35-41	69.5	12.7	40.1	41.3	39	M6 x 6
BF-CRT63-51	113.6	19	49.6	51.1	67	M8 x 8
BF-CRT63-63	113.6	19	60.4	63.7	67	M8 x 8
BF-CRT100-100	151.6	21.5	97.5	101.8	105	M8 x 16
BF-CRT150-150	202.5	24	147.6	152.8	155.5	M8 x 20
BF-CRT200-200	253.2	25	198.9	203.7	206.5	M8 x 24
BF-CRT250-250	336.55	28.5	250	254.5	258.5	M10 x 30
BF-CRT300-300	355.6	28.5	298.45	305.4	308.6	M10 x 30
BF-CRT350-350	419.1	28.5	349.25	356.1	358.7	M10 x 36

## CF Double Side Blank Flanges



Model No.	A	B
DSBL-CF16	33.8	7.5
DSBL-CF35	69.5	12.7
DSBL-CF63	113.6	18
DSBL-CF100	151.6	20
DSBL-CF150	202.5	22
DSBL-CF200	253.2	24.7
DSBL-CF250	336.55	28.5
DSBL-CF300	355.6	28.5
DSBL-CF350	419.1	28.5

## CF Double Side Bored Flanges



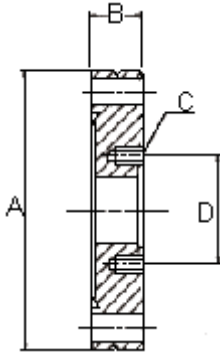
Model No.	A	B	C
DSBF-CF16	33.8	7.5	16
DSBF-CF35	69.5	12.7	35.5
DSBF-CF63	113.6	19	60.4
DSBF-CF100	151.6	21.5	97.5
DSBF-CF150	202.5	24	147.6
DSBF-CF200	253.2	25	198.9
DSBF-CF250	336.55	28.5	250
DSBF-CF300	355.6	28.5	298.45
DSBF-CF350	419.1	28.5	349.25

# VACUUM FITTINGS

WELLGROW INDUSTRIES CORP.

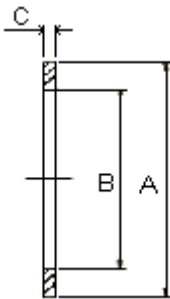


## CF Reducing Flange Adaptors



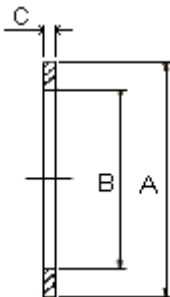
Model No.	A	B	C x No.	D
RF-CF35-16	69.5	12.7	M4 x 6	26.9
RF-CF63-16	113.5	18	M4 x 6	26.9
RF-CF63-35	113.6	18	M6 x 6	58.7
RF-CF100-35	151.6	20	M6 x 6	58.7
RF-CF100-63	151.6	20	M8 x 8	92.1
RF-CF150-35	202.5	22	M6 x 6	58.7
RF-CF150-63	202.5	22	M8 x 8	92.7
RF-CF150-100	202.5	22	M8 x 16	130.3
RF-CF200-35	253.2	24.7	M6 x 6	58.7
RF-CF200-63	253.2	24.7	M8 x 8	92.1
RF-CF200-100	253.2	24.7	M8 x 16	130.3
RF-CF200-150	253.2	24.7	M8 x 20	181
RF-CF250-35	336.55	28.5	M6 x 6	58.7
RF-CF250-63	336.55	28.5	M8 x 8	92.1
RF-CF250-100	336.55	28.5	M8 x 16	130.3
RF-CF250-150	336.55	28.5	M8 x 20	181
RF-CF250-200	336.55	28.5	M8 x 24	231.8

## CF Copper Gaskets



Model No.	A	B	C	Suitable Flange	Pack Q'ty
CG-CF16	21	16	2	CF16	10
CG-CF35	48	37	2	CF35	10
CG-CF63	82	63	2	CF63	10
CG-CF100	120	101	2	CF100	10
CG-CF150	171	152	2	CF150	5
CG-CF200	222	203	2	CF200	5
CG-CF250	294	269	2	CF250	5

## CF Sliver Plated Copper Gaskets

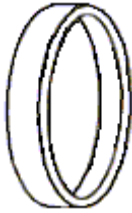


Model No.	A	B	C	Suitable Flange	Pack Q'ty
CGS-CF16	21	16	2	CF16	10
CGS-CF35	48	37	2	CF35	10
CGS-CF63	82	63	2	CF63	10
CGS-CF100	120	101	2	CF100	10
CGS-CF150	171	152	2	CF150	5
CGS-CF200	222	203	2	CF200	5
CGS-CF250	294	269	2	CF250	5

# VACUUM FITTINGS

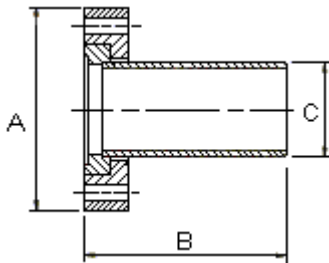
WELLGROW INDUSTRIES CORP.

## CF Flange Caps



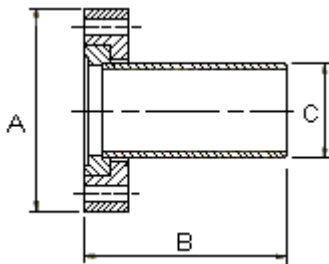
Model No.	Suitable Flange
C-CF63	CF63
C-CF100	CF100
C-CF150	CF150
C-CF200	CF200
C-CF250	CF250
C-CF300	CF300
C-CF350	CF350
C-CF400	CF400
C-CF500	CF500

## CF Half Nipples – Rotatable



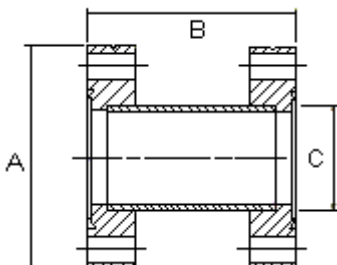
Model No.	A	B	C
HN-CR16	33.8	38.1	19.05
HN-CR35	69.5	62.5	38.1
HN-CR63	113.6	104.6	63.5
HN-CR100	151.6	135	101.6
HN-CR150	202.5	166.6	152.4
HN-CR200	253.2	203.2	203.2

## CF Half Nipples With Tapped Flanges – Rotatable



Model No.	A	B	C	D
HN-CFT16	33.8	38.1	19.05	M4
HN-CFT35	69.5	62.5	38.1	M6
HN-CFT63	113.6	104.6	63.5	M8
HN-CFT100	151.6	135	101.6	M8
HN-CFT150	202.5	166.6	152.4	M8
HN-CFT200	253.2	203.2	203.2	M8

## CF Nipples - Fixed

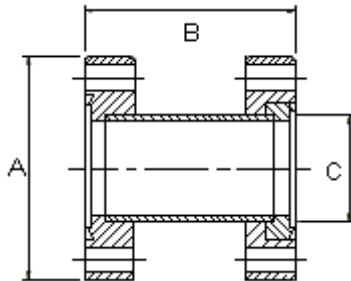


Model No.	A	B	C
NI-CF16	33.8	76	19.05
NI-CF35	69.5	126	38.1
NI-CF63	113.6	210	63.5
NI-CF100	151.6	270	101.6
NI-CF150	202.5	334	152.4
NI-CF200	253.2	334	203.2

# VACUUM FITTINGS

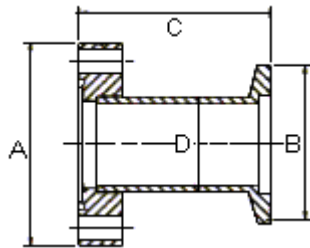
WELLGROW INDUSTRIES CORP.

## CF Nipples - 1 Flange Rotatable



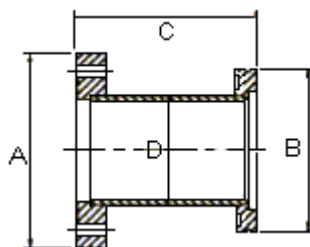
Model No.	A	B	C
NI-CR16	33.8	76	19.05
NI-CR35	69.5	126	38.1
NI-CR63	113.6	210	63.5
NI-CR100	151.6	270	101.6
NI-CR150	202.5	334	152.4
NI-CR200	253.2	334	203.2

## CF To NW Tubulated Adaptors



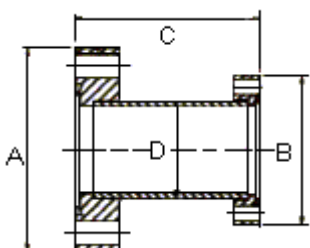
Model No.	A	B	C	D
TA-CF16-KF10	33.8	30	43	12.7
TA-CF16-KF16	33.8	30	43	19.05
TA-CF35-KF10	69.5	30	45.3	12.7
TA-CF35-KF16	69.5	30	45.3	19.05
TA-CF35-KF25	69.5	40	45.3	25.4
TA-CF35-KF40	69.5	55	45.3	38.1
TA-CF63-KF25	113.6	40	49.5	25.4
TA-CF63-KF40	113.6	55	49.5	38.1
TA-CF63-KF50	113.6	75	49.5	50.8

## CF To ISO Tubulated Adaptors



Model No.	A	B	C	D
TA-CF63-ISO63	113.6	95	90	63.5
TA-CF100-ISO63	151.6	95	90	76.2
TA-CF100-ISO100	151.6	130	90	101.6
TA-CF100-ISO160	151.6	180	90	101.6
TA-CF150-ISO63	202.5	95	90	76.2
TA-CF150-ISO100	202.5	130	90	114.3
TA-CF150-ISO160	202.5	180	90	152.4

## CF Reducing Adaptors – Fixed

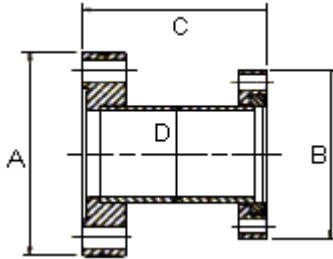


Model No.	A	B	C
RA-CF35-16	69.5	33.8	76.2
RA-CF63-16	113.6	33.8	76.2
RA-CF63-35	113.6	69.5	76.2
RA-CF100-35	151.6	69.5	76.2
RA-CF100-63	151.6	113.6	76.2
RA-CF150-35	202.5	69.5	76.2
RA-CF150-63	202.5	113.6	76.2
RA-CF150-100	202.5	151.6	76.2

# VACUUM FITTINGS

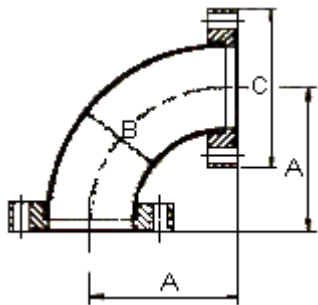
WELLGROW INDUSTRIES CORP.

## CF Reducing Adaptors - Small Flange Rotatable



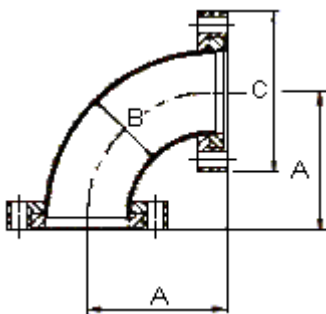
Model No.	A	B	C	D
RA-CF35-CR16	69.5	33.8	76.2	19.05
RA-CF63-CR16	113.6	33.8	76.2	19.05
RA-CF63-CR35	113.6	69.5	76.2	38.1
RA-CF100-CR35	151.6	69.5	76.2	38.1
RA-CF100-CR63	151.6	113.6	76.2	63.5
RA-CF150-CR35	202.5	69.5	76.2	38.1
RA-CF150-CR63	202.5	113.6	76.2	63.5
RA-CF150-CR100	202.5	151.6	76.2	101.6

## CF 90° Elbows - Fixed (USA, Europe)



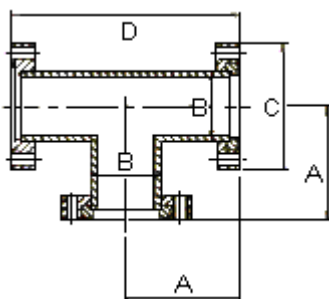
Model No.	A	B	C
E90-CF16	38	19.05	33.8
E90-CF35	63	38.1	69.5
E90-CF63	105	63.5	113.6
E90-CF100	135	101.6	151.6
E90-CF150	167	152.4	202.5
E90-CF200	203	203.2	253.2

## CF 90° Elbows - Rotatable (USA, Europe)



Model No.	A	B	C
E90-CR16	38	19.05	33.8
E90-CR35	63	38.1	69.5
E90-CR63	105	63.5	113.6
E90-CR100	135	101.6	151.6
E90-CR150	167	152.4	202.5
E90-CR200	203	203.2	253.2

## CF Tees - Fixed (USA, Europe)

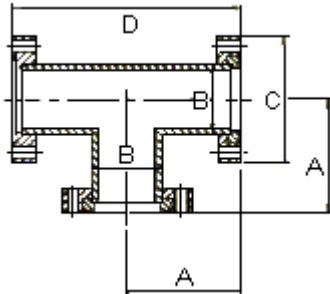


Model No.	A	B	C	D
T-CF16	38	19.05	33.8	76
T-CF35	63	38.1	69.5	126
T-CF63	105	63.5	113.6	210
T-CF100	135	101.6	151.6	270
T-CF150	167	152.4	202.5	334
T-CF-200	203	203.2	253.2	406

# VACUUM FITTINGS

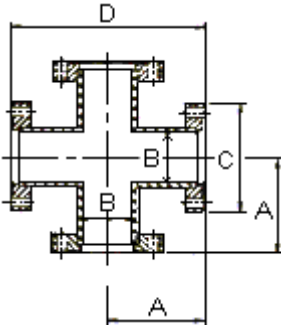
WELLGROW INDUSTRIES CORP.

## CF Tees - 2 Flanges Rotatable (USA, Europe)



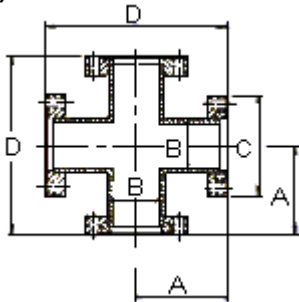
Model No.	A	B	C	D
T-CR16	38	19.05	33.8	76
T-CR35	63	38.1	69.5	126
T-CR63	105	63.5	113.6	210
T-CR100	135	101.6	151.6	270
T-CR150	167	152.4	202.5	334
T-CR200	203	203.2	253.2	406

## CF 4 Way Crosses - Fixed (USA, Europe)



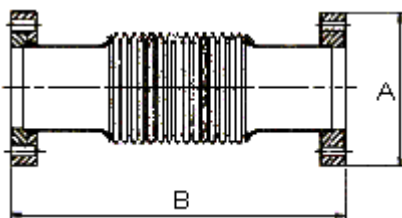
Model No.	A	B	C	D
4C-CF16	38	19.05	33.8	76
4C-CF35	63	38.1	69.5	126
4C-CF63	105	63.5	113.6	210
4C-CF100	135	101.6	151.6	270
4C-CF150	167	152.4	202.5	334
4C-CF200	203	203.2	253.2	406

## CF 4 Way Crosses - 2 Flanges Rotatable (USA, Europe)



Model No.	A	B	C	D
4C-CR16	38	19.05	33.8	76
4C-CR35	63	38.1	69.5	126
4C-CR63	105	63.5	113.6	210
4C-CR100	135	101.6	151.6	270
4C-CR150	167	152.4	202.5	334
4C-CR200	203	203.2	253.2	406

## CF Flexible Hoses - 1 Flange Rotatable



Model No.	A	B
FH-CF16-250	33.8	250
FH-CF16-500	33.8	500
FH-CF16-750	33.8	750
FH-CF16-1000	33.8	1000
FH-CF35-250	69.5	250
FH-CF35-500	69.5	500
FH-CF35-750	69.5	750
FH-CF35-1000	69.5	1000
FH-CF63-250	113.6	250
FH-CF63-500	113.6	500
FH-CF63-750	113.6	750
FH-CF63-1000	113.6	1000
FH-CF100-250	151.6	250
FH-CF100-500	151.6	500
FH-CF100-750	151.6	750
FH-CF100-1000	151.6	1000