

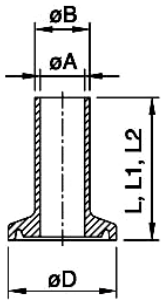
SANITARY STAINLESS STEEL FITTINGS & VALVES

WELLGROW INDUSTRIES CORP.

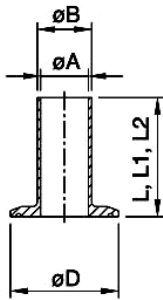
BPE Fittings

BPE 14AMP-AWF Weld Ferrule (DT-22)

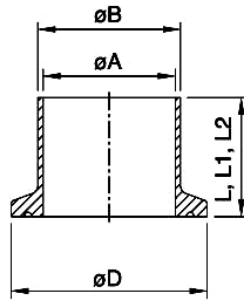
1/2" & 3/4"



1.0"

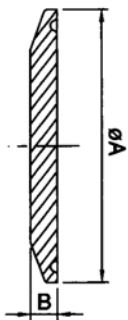


1.5"- 4.0"



SIZE	A	B	D	L	L1	L2
1/2"	9.4	12.7	25.0	44.5	12.7	28.6
3/4"	15.7	19.1	25.0	44.5	12.7	28.6
1"	22.1	25.4	50.5	44.5	12.7	28.6
1-1/2"	34.8	38.1	50.5	44.5	12.7	28.6
2"	47.5	50.8	64.0	57.2	12.7	28.6
2-1/2"	60.2	63.5	77.5	57.2	12.7	28.6
3"	72.9	76.2	91.0	57.2	12.7	28.6
4"	97.4	101.6	119.0	57.2	12.7	28.6

BPE 16AMP Solid End Cap



SIZE	A	B
1/2"	25.4	6.00
3/4"	25.4	6.00
1"	50.5	6.35
1-1/2"	50.5	6.35
2"	64.0	6.35
2-1/2"	77.5	6.35
3"	91.0	6.35
4"	119.0	8.90

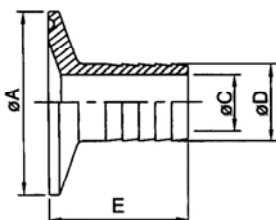
BPE 16W Weld Cap



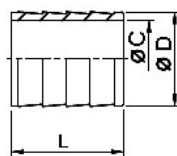
SIZE	A	B
1/2"	12.7	38.1
3/4"	19.05	38.1
1"	25.4	38.1
1-1/2"	38.1	38.1
2"	50.8	38.1
2-1/2"	63.5	38.1
3"	76.2	44.5
4"	101.6	50.8
6"	152.4	63.5

BPE Hose Adapter

14MPHR



14WHR



SIZE	C	D	A	E	L
1/2"	9.5	13.7	50.5	38.0	25.3
3/4"	15.8	21.4	50.5	38.0	25.3
1" x 1/2"	9.5	13.7	50.5	38.0	25.3
1" x 3/4"	15.8	21.4	50.5	38.0	25.3
1"	20.6	25.4	50.5	43.0	30.3
1-1/2" x 1/2"	9.5	13.7	50.5	38.0	25.3
1-1/2" x 3/4"	15.8	21.4	50.5	38.0	25.3
1-1/2" x 1"	20.6	25.4	50.5	43.0	25.3
1-1/2"	33.2	38.1	50.5	43.0	30.3
2" x 1-1/2"	33.2	38.1	64.0	43.0	30.3
2"	46.0	50.8	64.0	58.7	46.0
2-1/2"	58.7	63.5	77.5	59.5	46.8
3"	72.0	76.2	91.0	78.6	65.9
4"	97.6	101.6	119.0	85.5	72.8