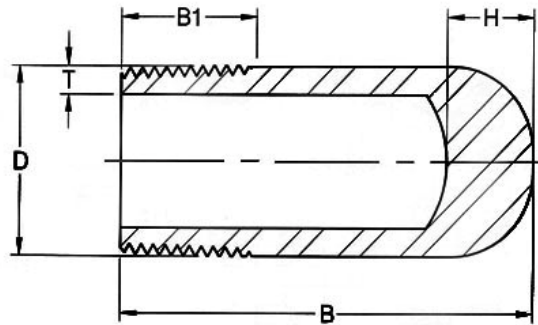


## Bull Plugs Threaded

MSS-SP-95-2006



Nom. Pipe Size	D	B	B1	T (Min)				H
				Sch.40 (STD)	Sch.80 (XS)	Sch.160	XXS	
1/8"	10.3	34	9.5	1.73	2.41			14
1/4"	13.7	34	11.0	2.24	3.02			14
3/8"	17.1	57	12.5	2.31	3.20			14
1/2"	21.3	64	14.5	2.77	3.73	4.78	7.47	14
3/4"	26.7	70	16.0	2.87	3.91	5.56	7.82	18
1"	33.4	76	19.0	3.38	4.56	6.35	9.09	18
1-1/4"	42.2	83	20.5	3.56	4.85	6.35	9.70	18
1-1/2"	48.3	89	20.5	3.68	5.05	7.14	10.15	18
2"	60.3	102	22.0	3.91	5.54	8.74	11.07	20
2-1/2"	73.0	127	27.0	5.16	7.01	9.53	14.02	20
3"	88.9	152	28.5	5.49	7.60	11.13	15.24	20
4"	114.3	178	32.0	6.35	8.08	13.49	17.12	20

(1) Dimensions in Millimeters.

(2) Thread in accordance with ASME B1.20.1

(3) Wall thickness (T Min.) in accordance with ASME B36.10M.