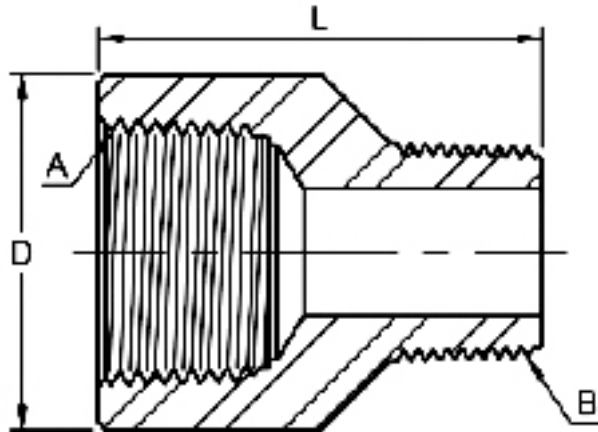


Adapter Threaded



3000LB

DN	Nom Pipe Size A	D	L	Threaded Size B
8	1/4"	19	33	1/8"
10	3/8"	22	35	1/4"
15	1/2"	28	42	3/8"
20	3/4"	35	47	1/2"
25	1"	44	55	3/4"
32	1-1/4"	57	63	1"
40	1-1/2"	64	66	1-1/4"
50	2"	76	76	1-1/2"
65	2-1/2"	92	90	2"
80	3"	108	110	2-1/2"
100	4"	140	120	3"

(1) Dimensions in Millimeters.

(2) Thickness in accordance with ANSI / ASME B1.20.1 1983

(3) Dimensions may vary according to the customers' and manufacturer's requirement.